

discovering

PARTNERSHIPS

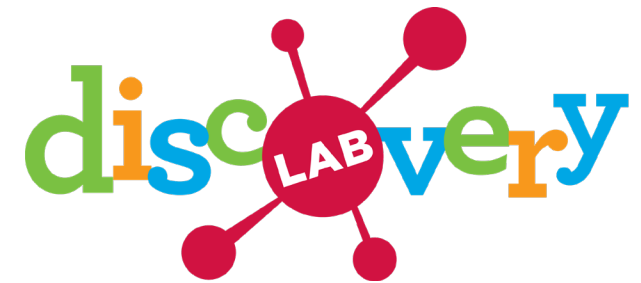


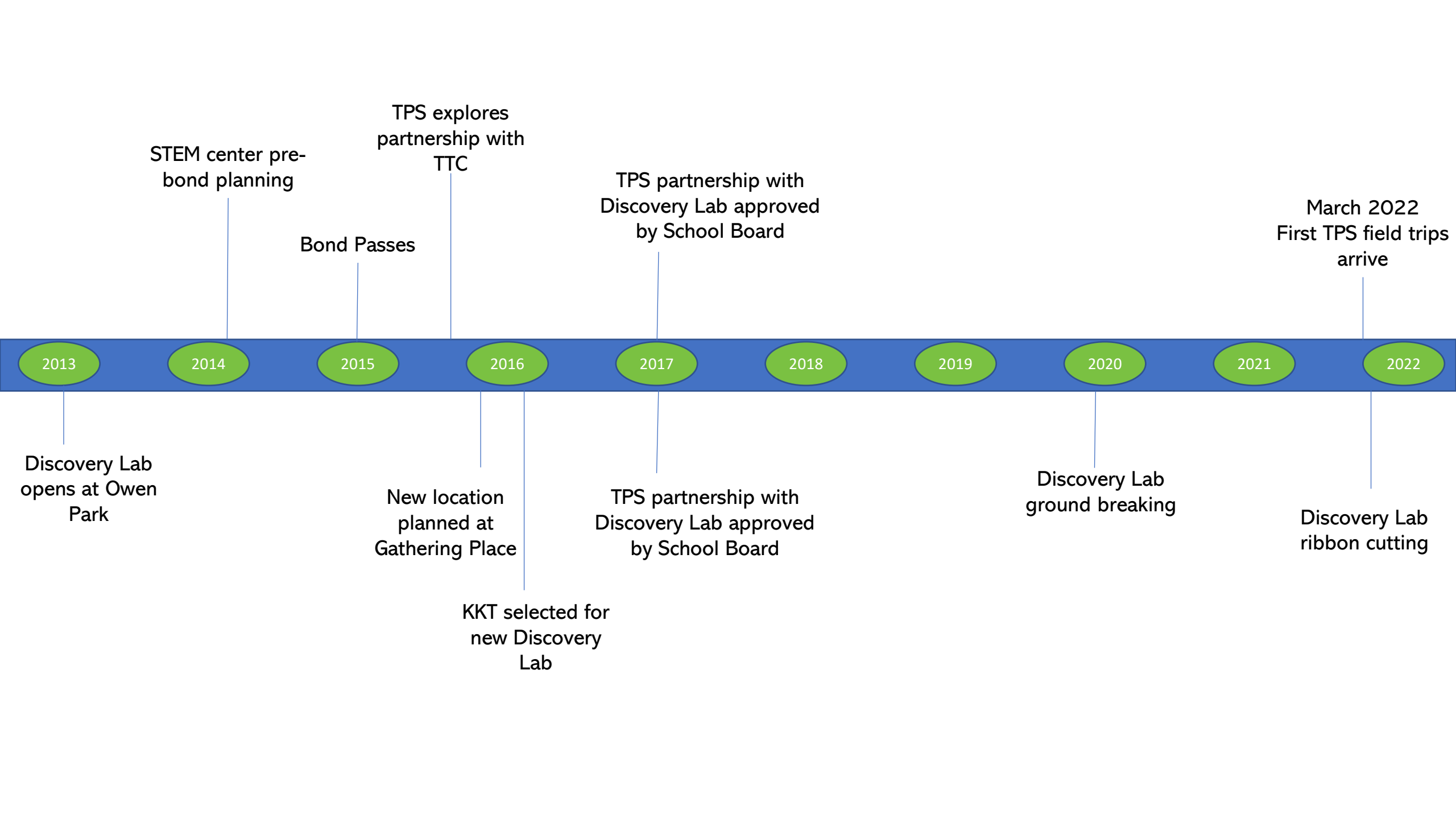
Sarah Gould
AIA, A4LE
Owner



Lynnsey Childress
Director of Exhibits and
Visitor Engagement







2013

Discovery Lab opens at Owen Park

2014

STEM center pre-bond planning

2015

Bond Passes

2016

TPS explores partnership with TTC

New location planned at Gathering Place

KKT selected for new Discovery Lab

2017

TPS partnership with Discovery Lab approved by School Board

TPS partnership with Discovery Lab approved by School Board

2018

2019

2020

Discovery Lab ground breaking

2021

2022

March 2022 First TPS field trips arrive

Discovery Lab ribbon cutting

discovery LAB





To inspire children, connect families, and build community through exploration, exhibits, programming, and play.

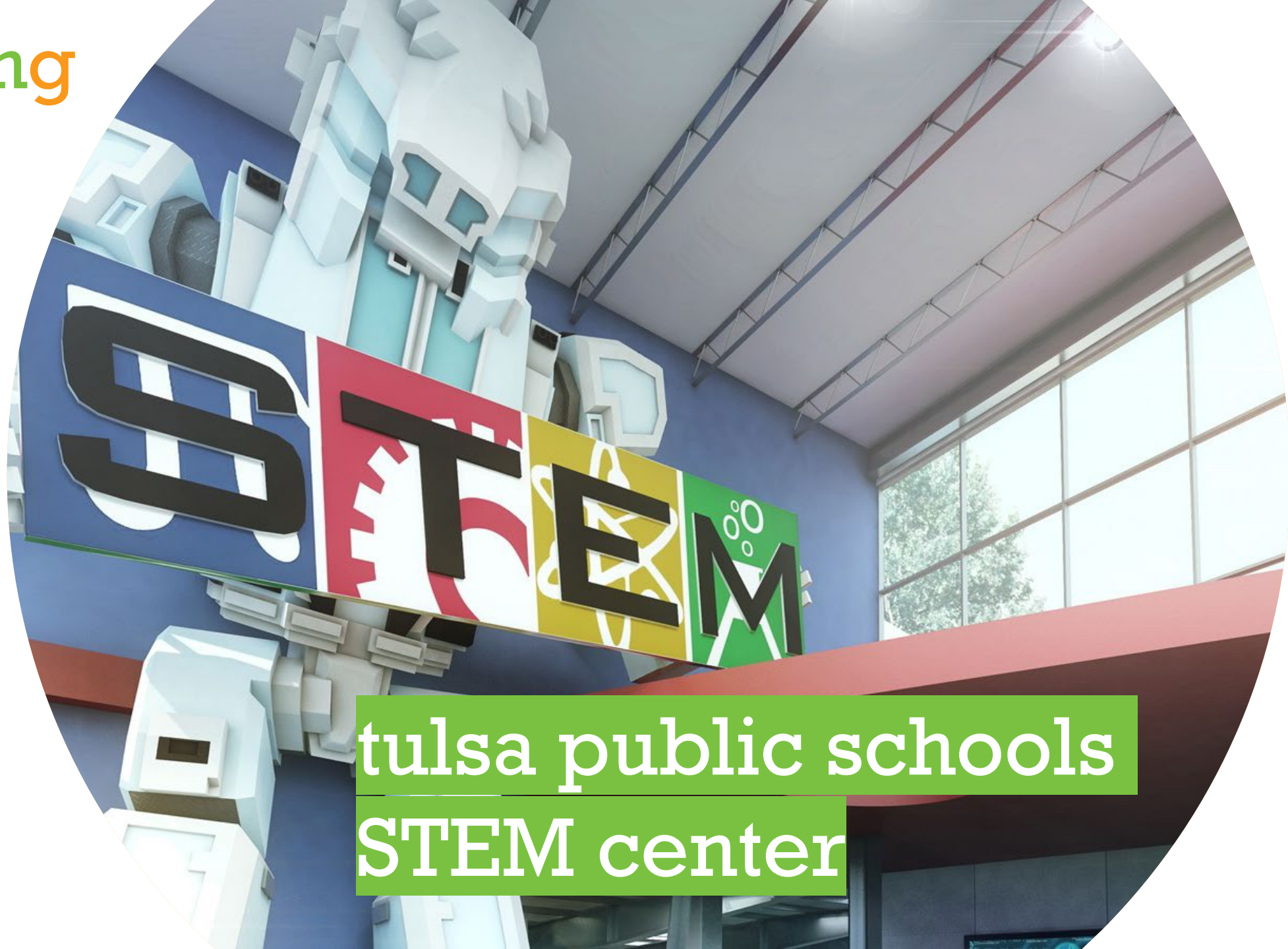


OWEN PARK



discovering

Partnerships



tulsa public schools
STEM center



Tulsa Public Schools

District Area:

177.6 square miles

39,609 Students

72 Languages Spoken

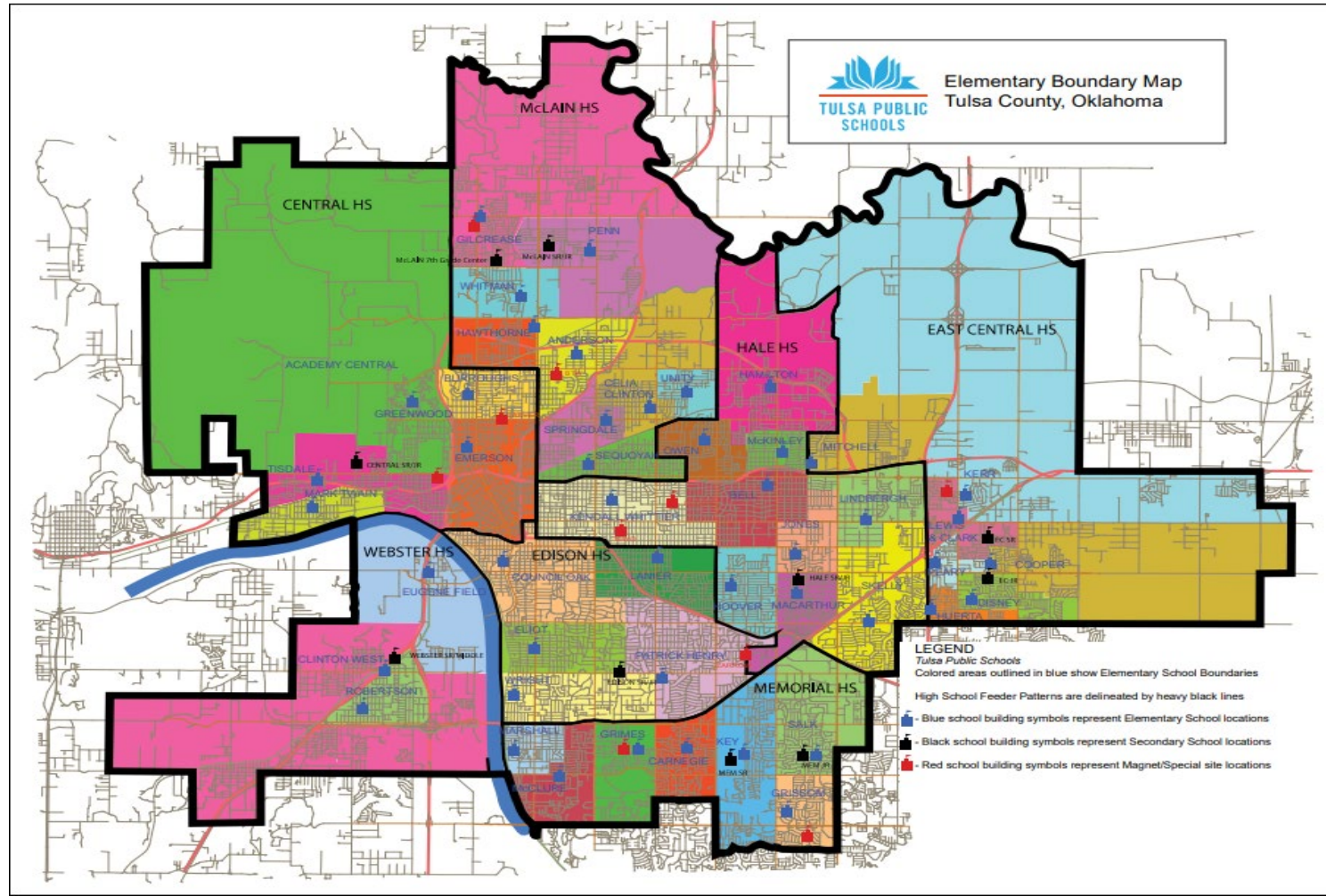
83 Schools:

- 59 elementary schools
- 15 middle schools
- 9 high schools

78%
ECONOMICALLY
DISADVANTAGED

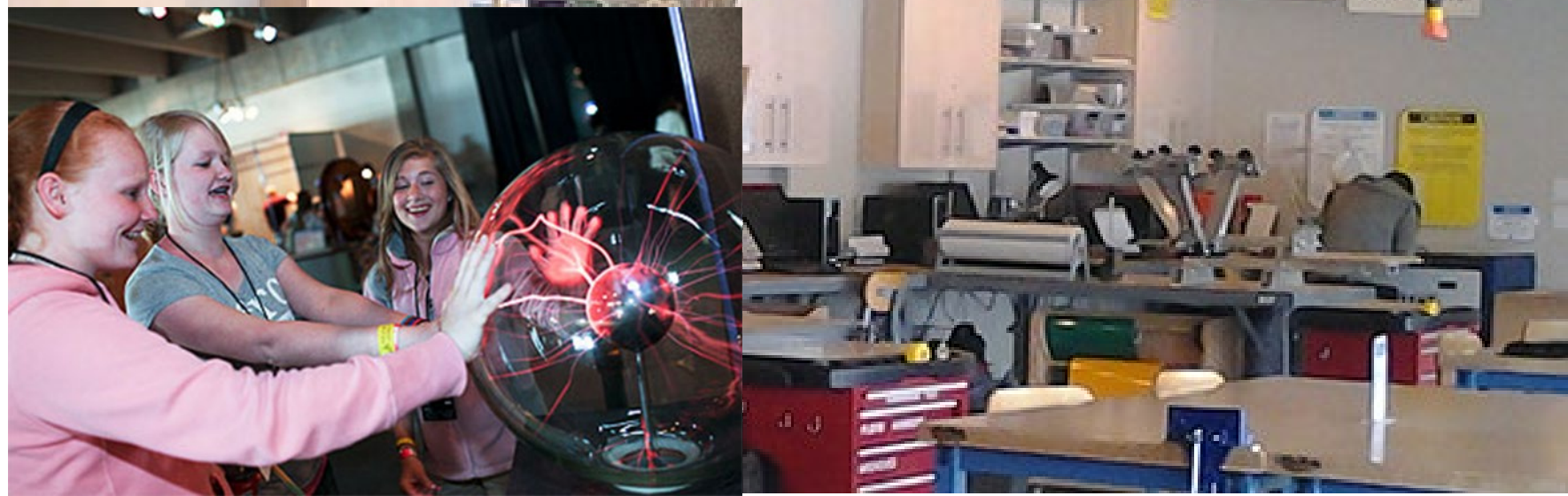
21%
MULTI-LINGUAL
LEARNERS

19%
STUDENTS WITH
DISABILITIES



2015 BOND

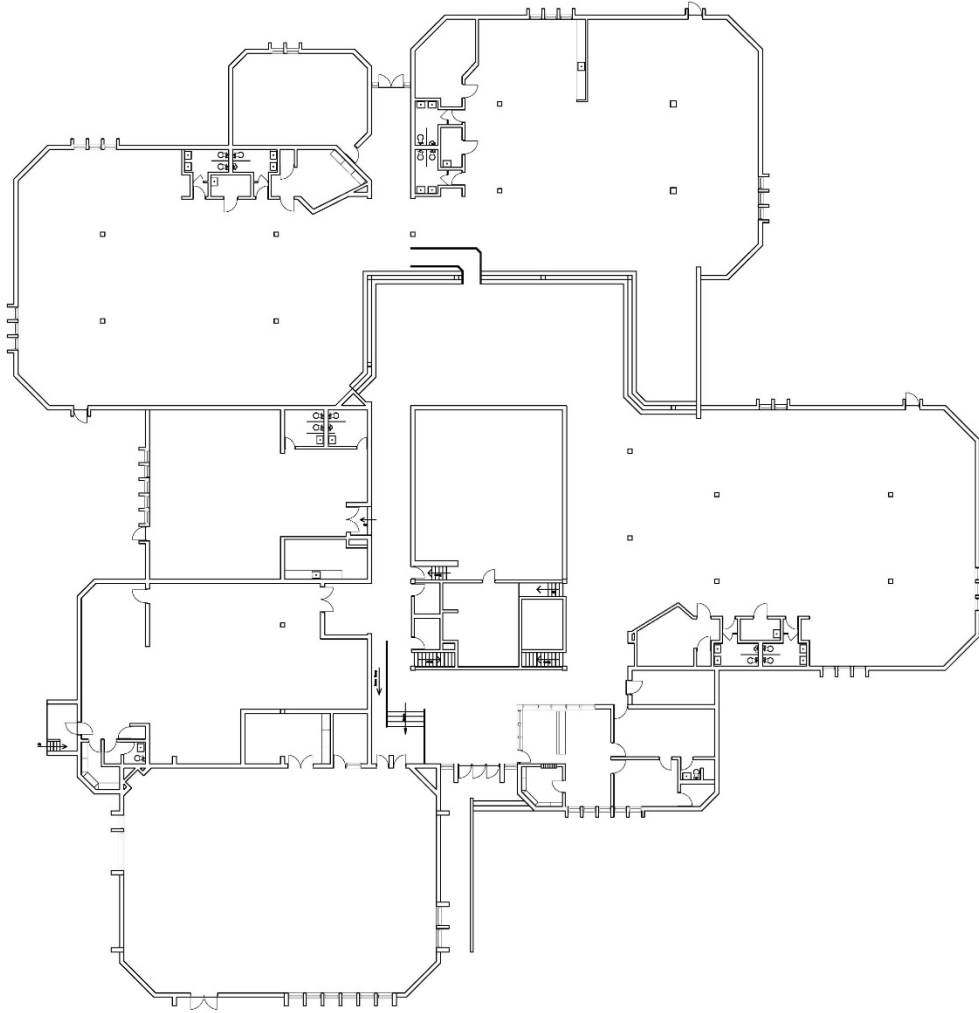
A District-Wide **STEM** Center



STEM CENTER

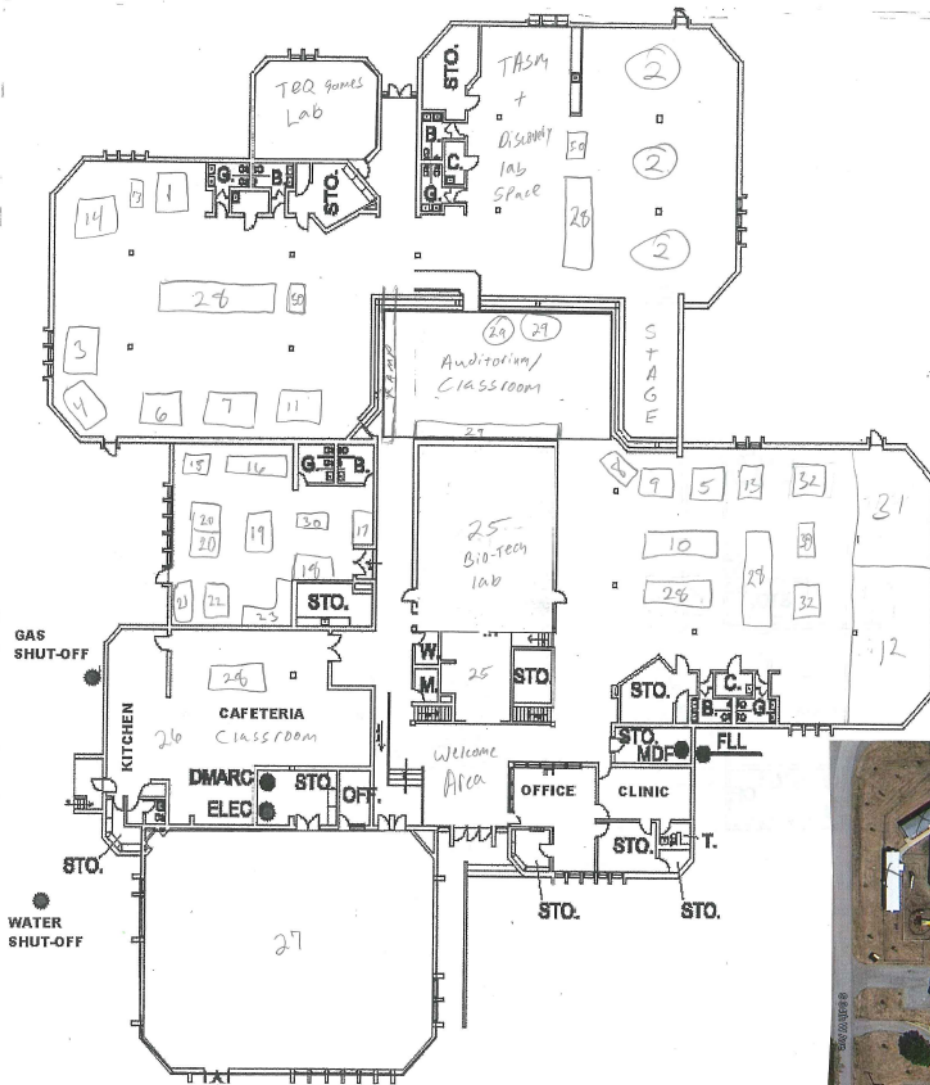


TULSA PUBLIC
SCHOOLS



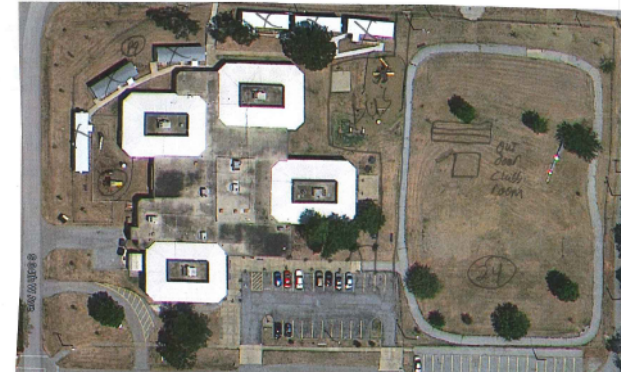
STEM CENTER





STEM CENTER Components

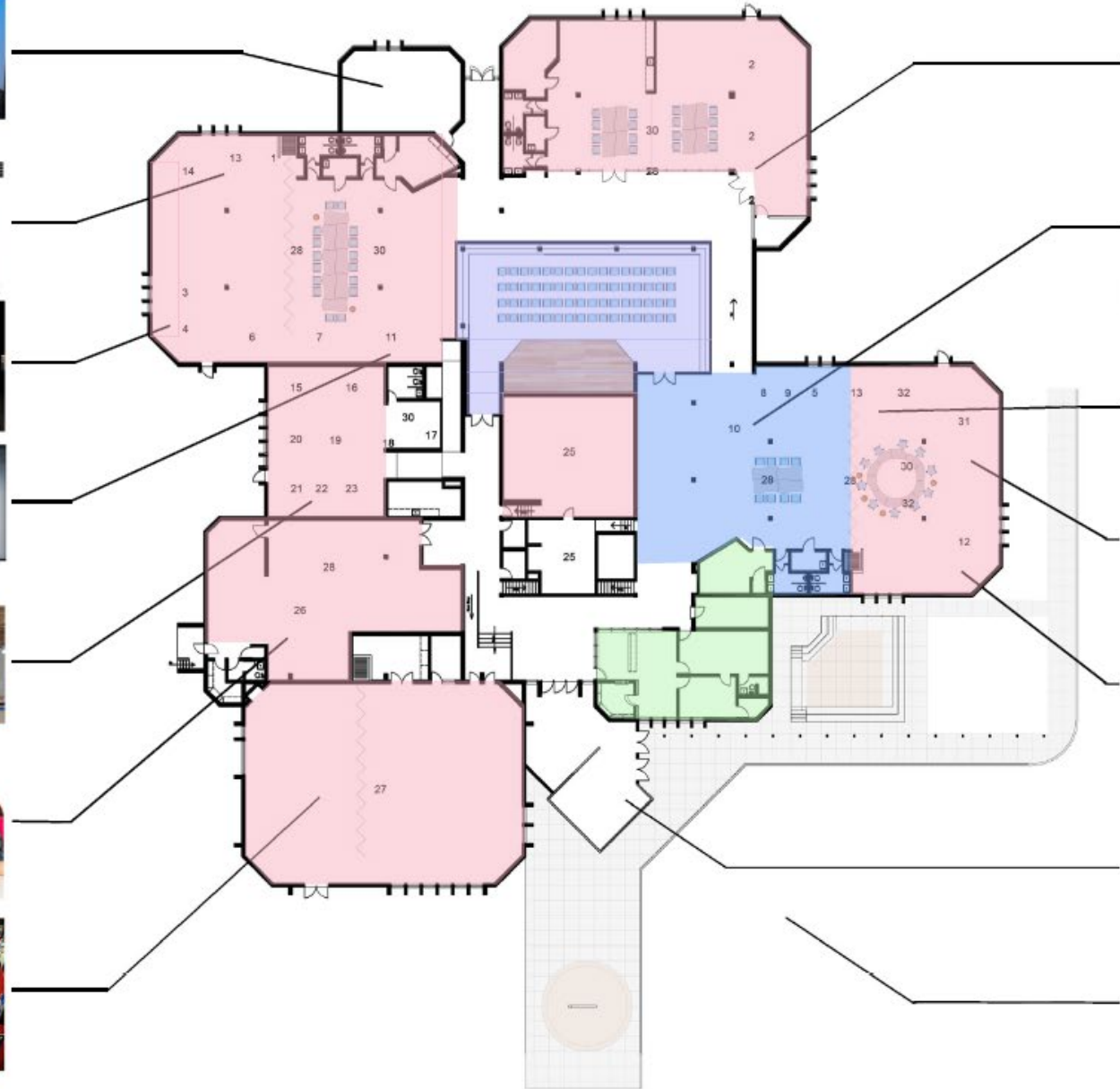
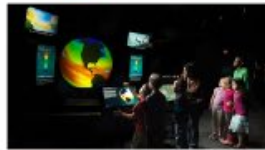
1. Erosion
2. Motion/energy
3. Illumination/florescent/solar
4. Climate and weather
5. Wave mechanics/digital communications
6. Earth/Astronomy
7. Ecology/environmental
8. Material science/nano
9. Thermal dynamics
10. Electricity/electronics/magnetism
11. Earth/geospatial
12. Robotics
13. Wind tunnel
14. Micro/macro
15. Laser cutter
16. 3-d printing/fabrication
17. Composite press
18. Material tester
19. Duplicating router
20. CNC mill/lathe
21. Material affixing/welding/soldering/brazing
22. CNC Plasma cutter
23. Power tools/ band saw, drill press, etc.
24. Bio-Dome/ Green house/gardens
25. Bio-Tech Lab (Includes equipment TBD)
26. Chemistry of Food
27. Career Gallery
28. Work tables/chairs for project and fabrication
29. Computer stations
30. Tool/equipment carts
31. Flight and Space (including planes/rockets/kites etc.)
32. Other TBD as need or insight reveals



STEM CENTER



TULSA PUBLIC
SCHOOLS

















TULSA PUBLIC
SCHOOLS

discovering

Partnerships

a park for all





PHASE 1

PHASE 2

PEDESTRIAN BRIDGE

RIVERSIDE DRIVE

WALKING DRIVE



Children's
Museum

Museum
Hill

Crow
Creek

Riverside Drive

+6.5

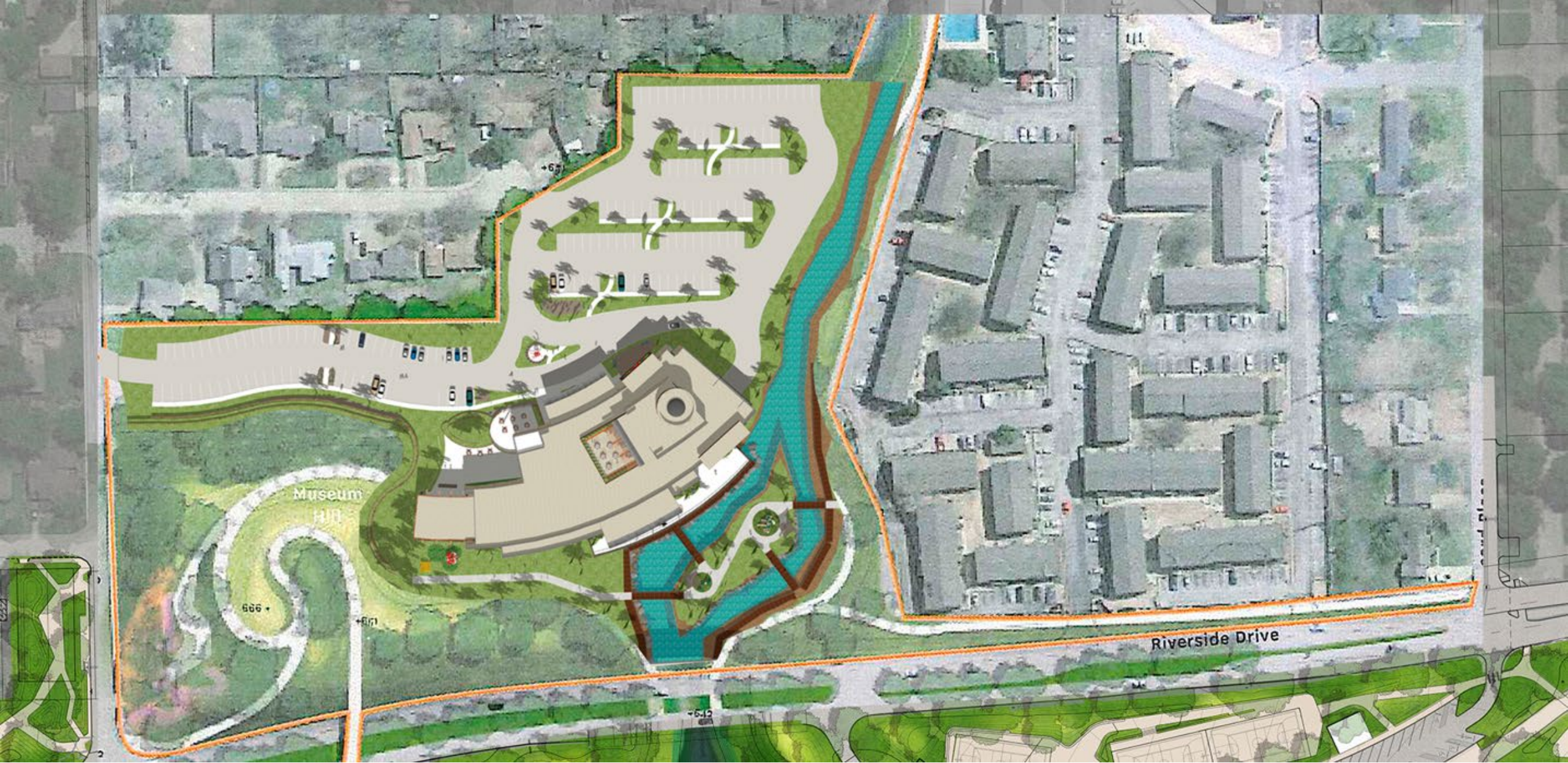
+5.3

+6.18

+6.66

+6.1

+6.12





Riverside Drive

+6.5

+6.3

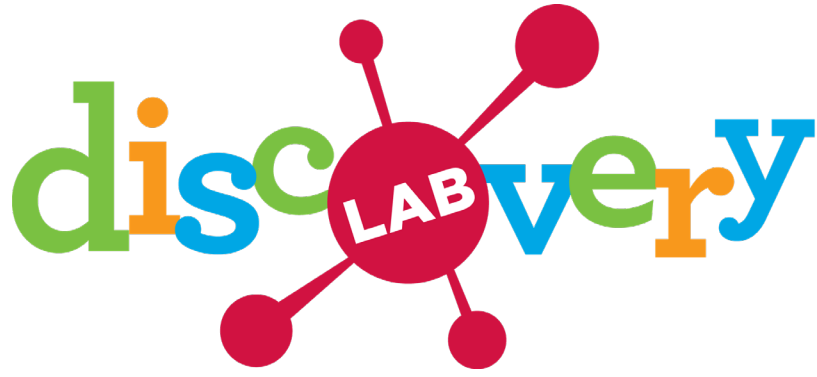
+6.1

discovering

Partnerships

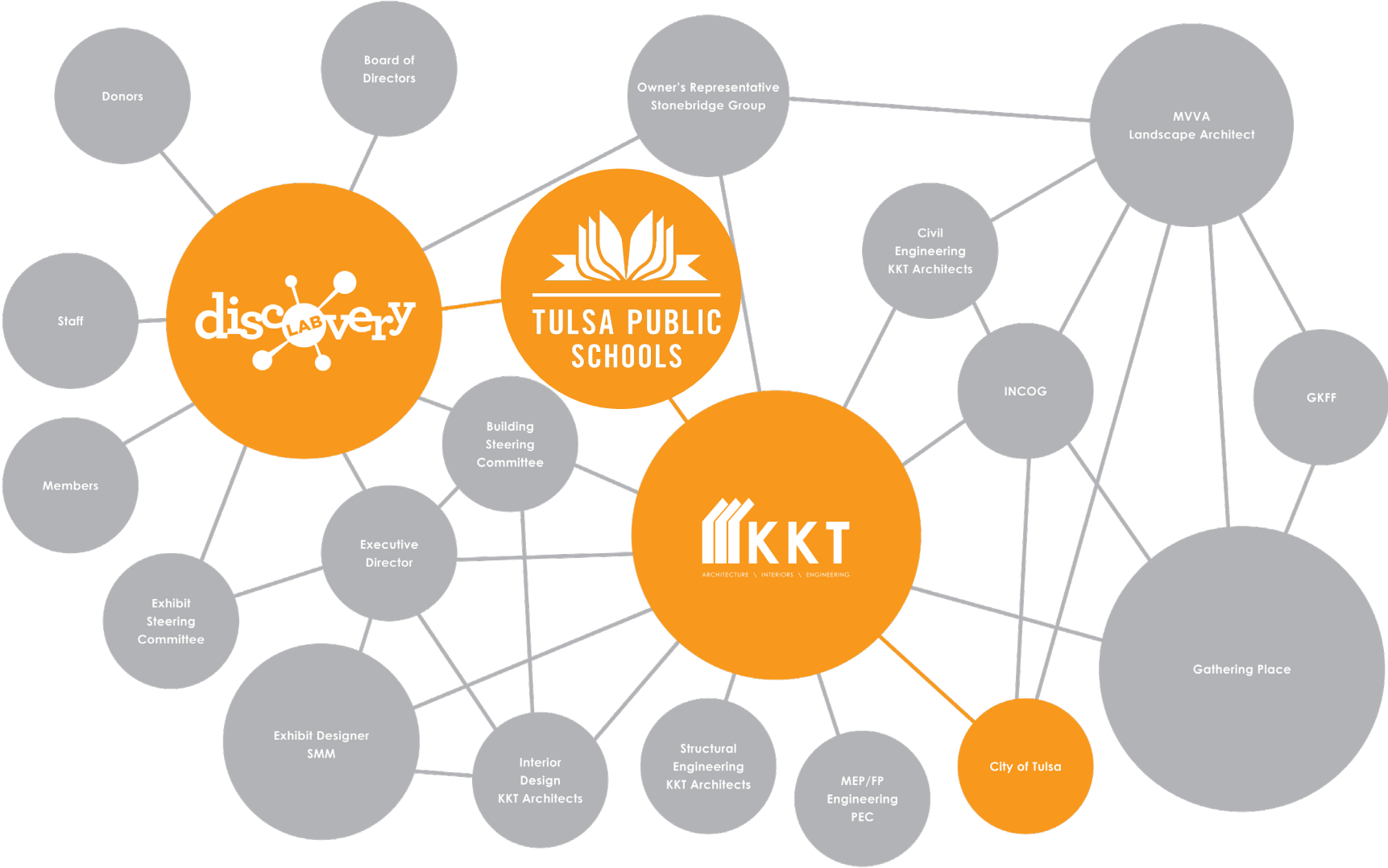


putting the pieces together



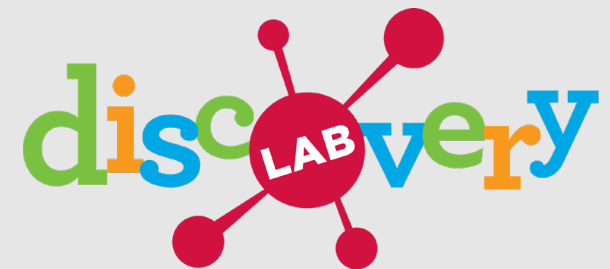
- In search of Funding ←
- Looking to expand outreach ←
- Educational Resources →
- Building Funds Available
- Students
- Operational Funding Gap

STAKEHOLDERS



A New Partnership

- Why Tulsa Public Schools?
- Constructing a deal

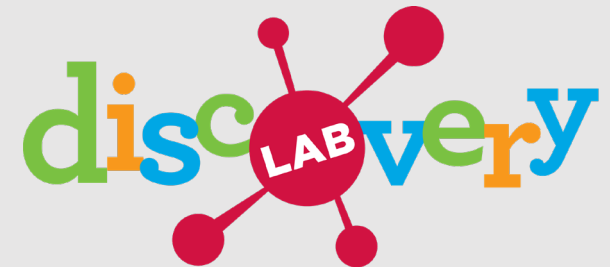


Fundraising

- Capital Campaign

Includes: Operation/Construction/Land/Endowment

- 2015 Bond



discovering

Partnerships

developing the vision





E31st St

S Boston Ct

S Boston Pl

E31st St

Crow Creek

Riverside Dr

Riverside Dr

Riverside Dr

River Parks East Trail

River Parks East Trail

River Parks East Trail

River Parks East Trail

Sports Courts

Public Bathroom

BMX park

Skate Park

Four Seasons Garden

S Cincinnati Ave

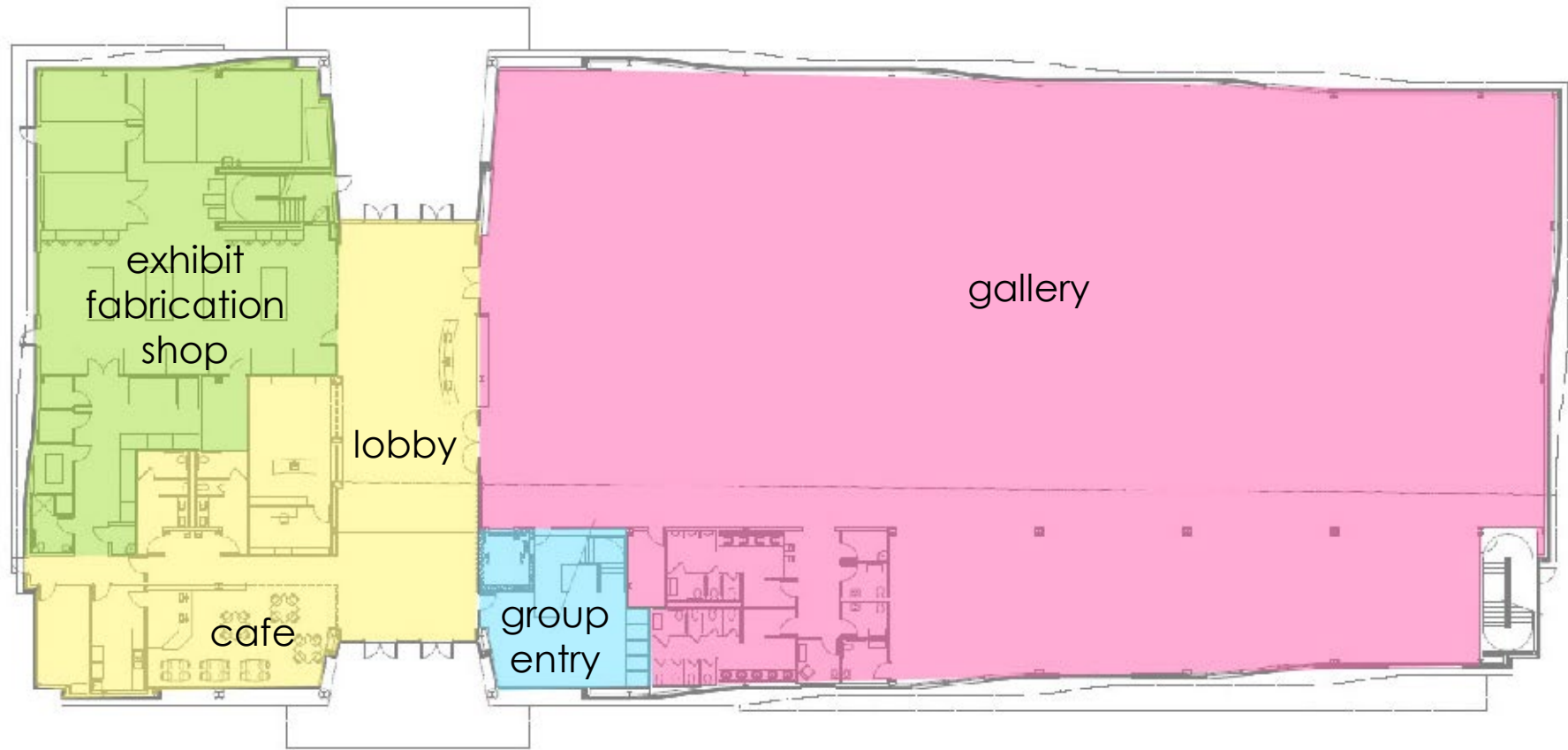
E33rd Pl

E33rd Pl

E33rd Pl

1st Floor

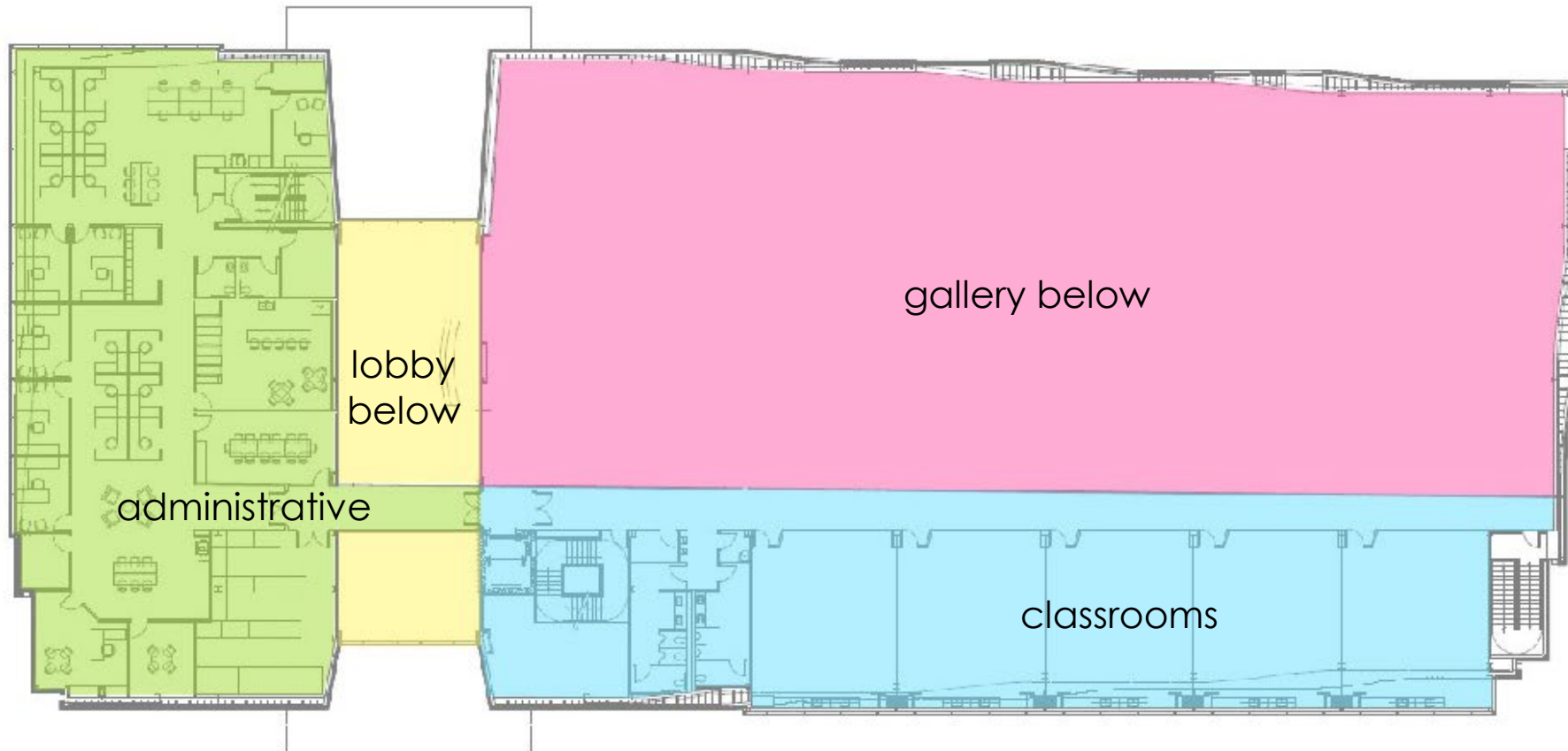
Gathering Place



Riverside Drive

2nd Floor

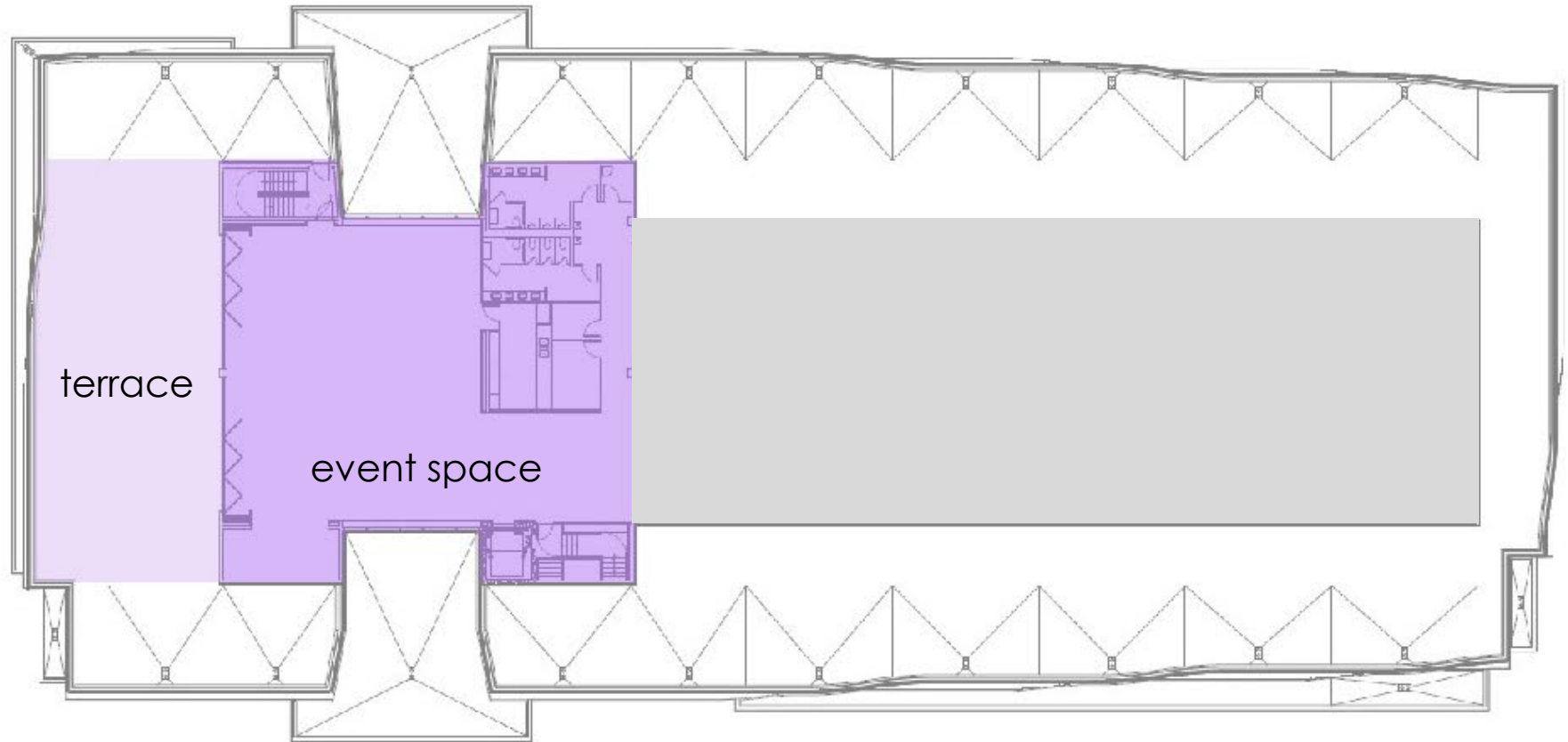
Gathering Place



Riverside Drive

3rd Floor

Gathering Place

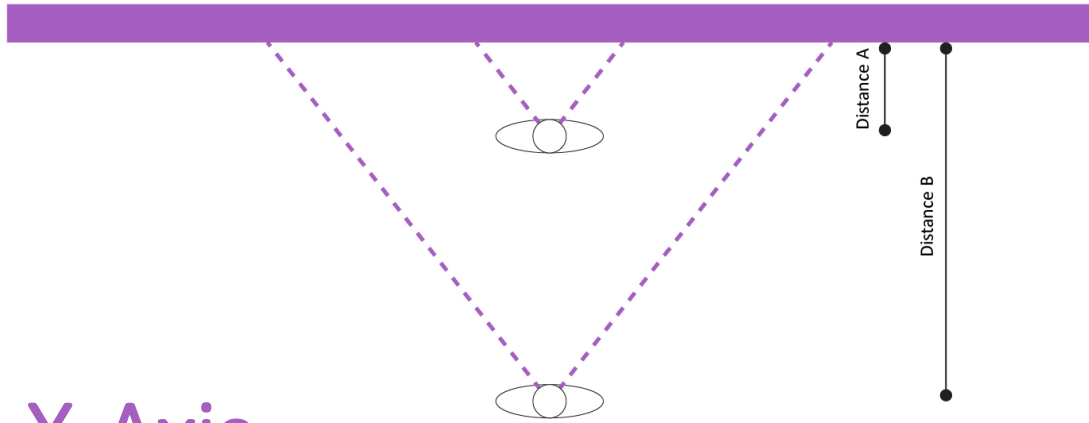


Riverside Drive



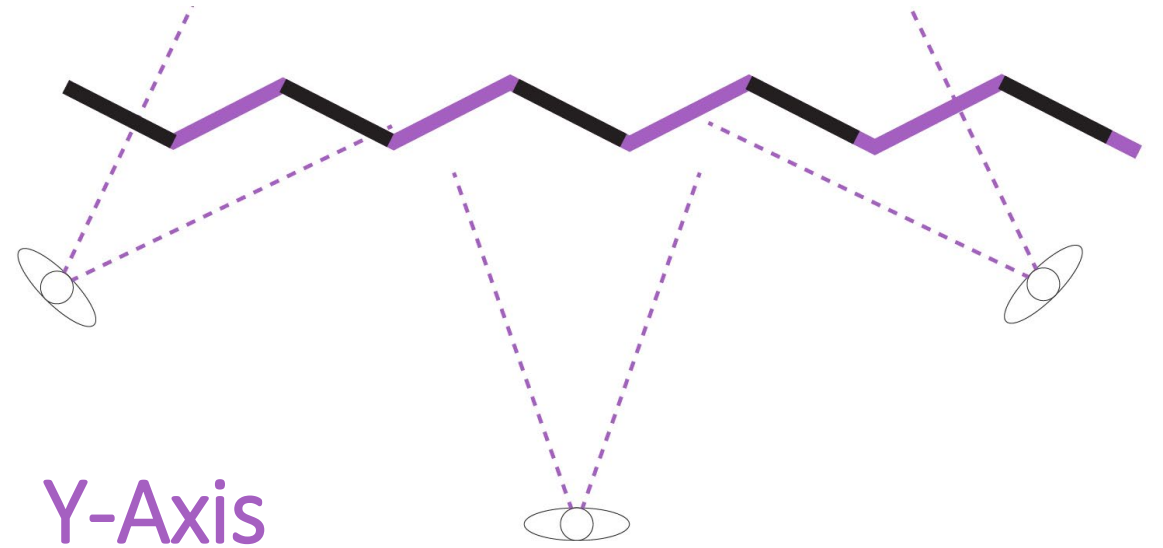
Doing Extraordinary things
with ordinary materials





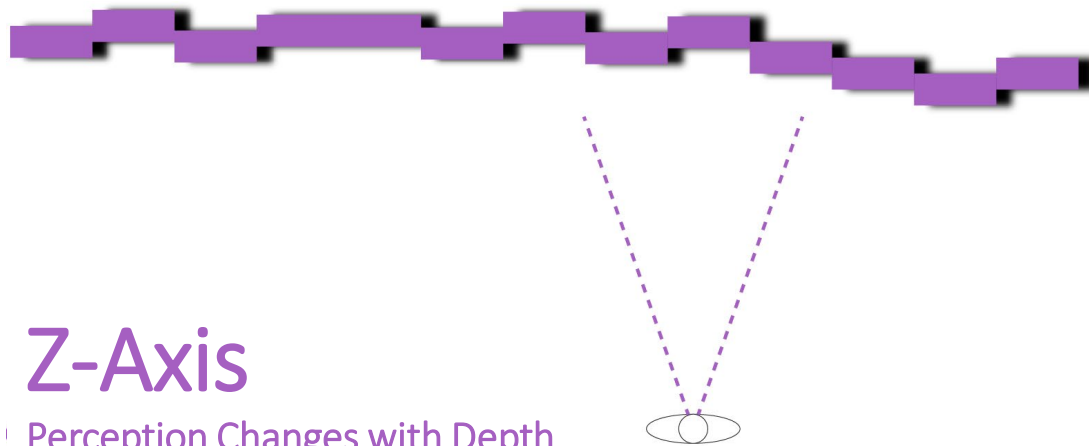
X-Axis

Perception Changes with Distance



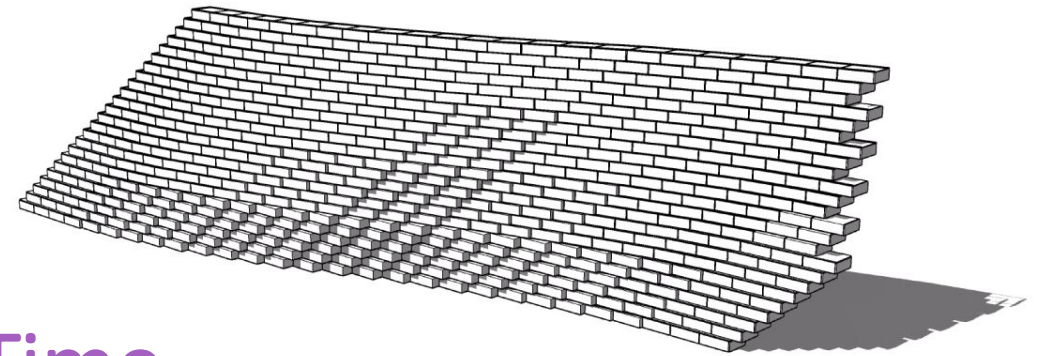
Y-Axis

Perception Changes with Position



Z-Axis

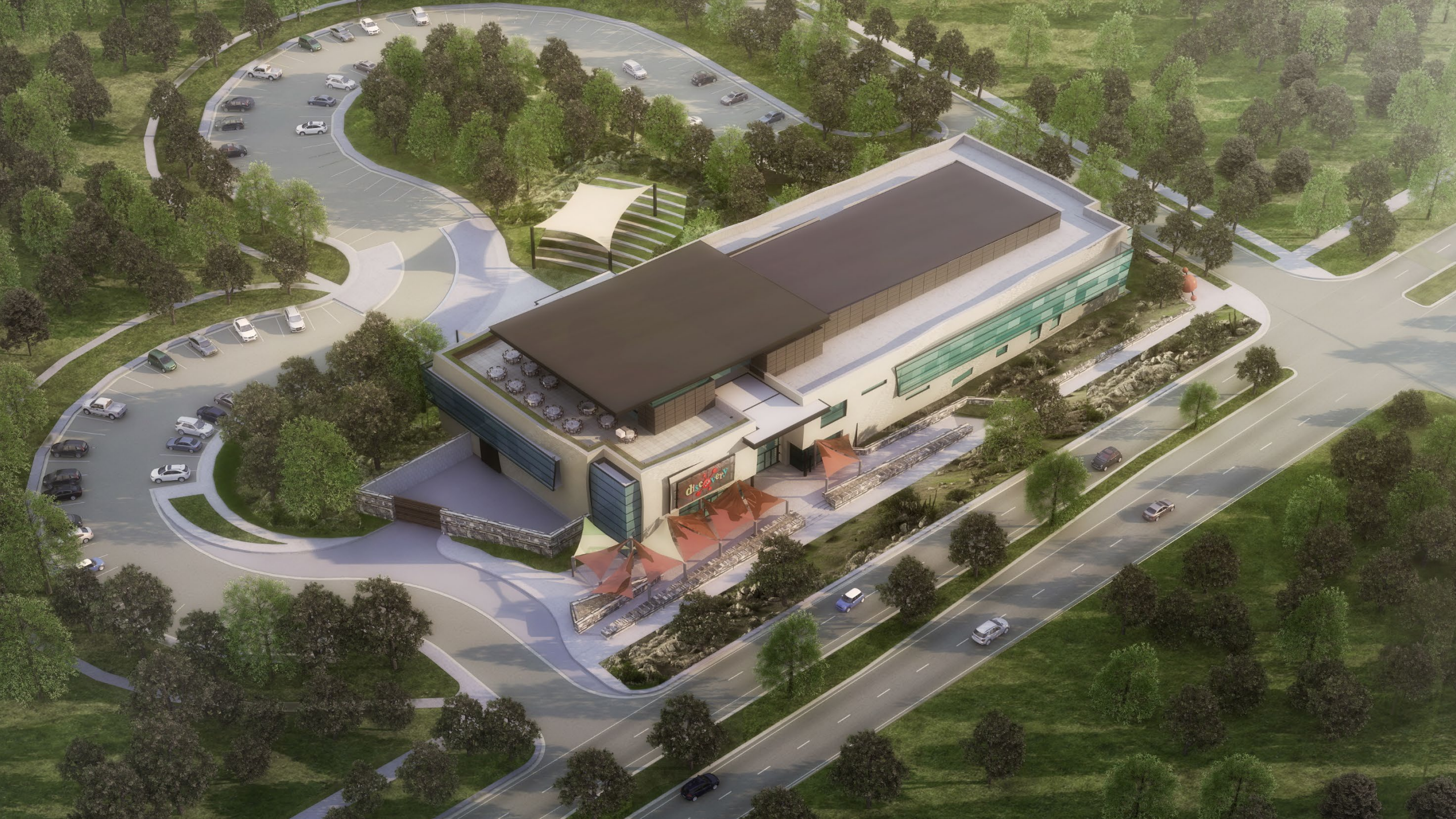
Perception Changes with Depth



Time

Perception Changes with Time













discovering

Partnerships



Grand Opening
January 2022



discovery LAB



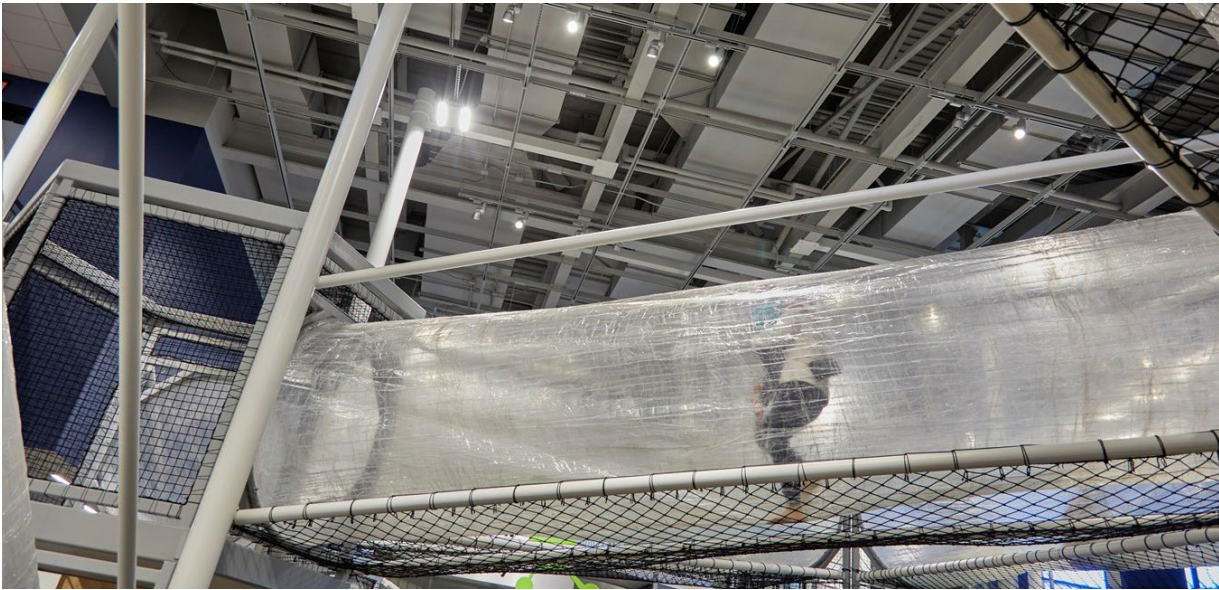














discovering

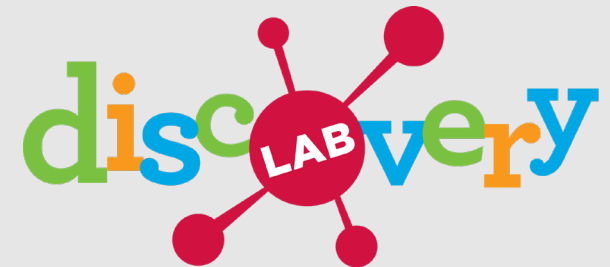
Partnerships



what comes next

Ripple Effects of Partnership

- Year-round Staffing
- Museum Occupied During the Day
- Additional Funds/Leveraging Partnership

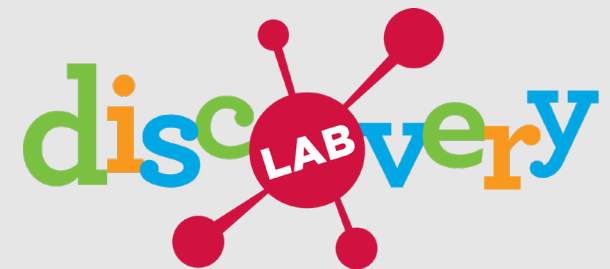


Education Programming

As the bond-funded STEAM Center for Tulsa Public Schools, Discovery Lab is developing and delivering hands-on, focused STEAM programming connected to Oklahoma Academic Standards within the five classrooms at the new museum on Riverside. The STEAM Center will impact 25,000 Tulsa Public Schools students in pre-k through sixth grade each year with cornerstone, “memory-making” educational experiences and still not fill 50% of the Education Center capacity to serve the region's school districts.

2nd Grade - Matter and its Interactions

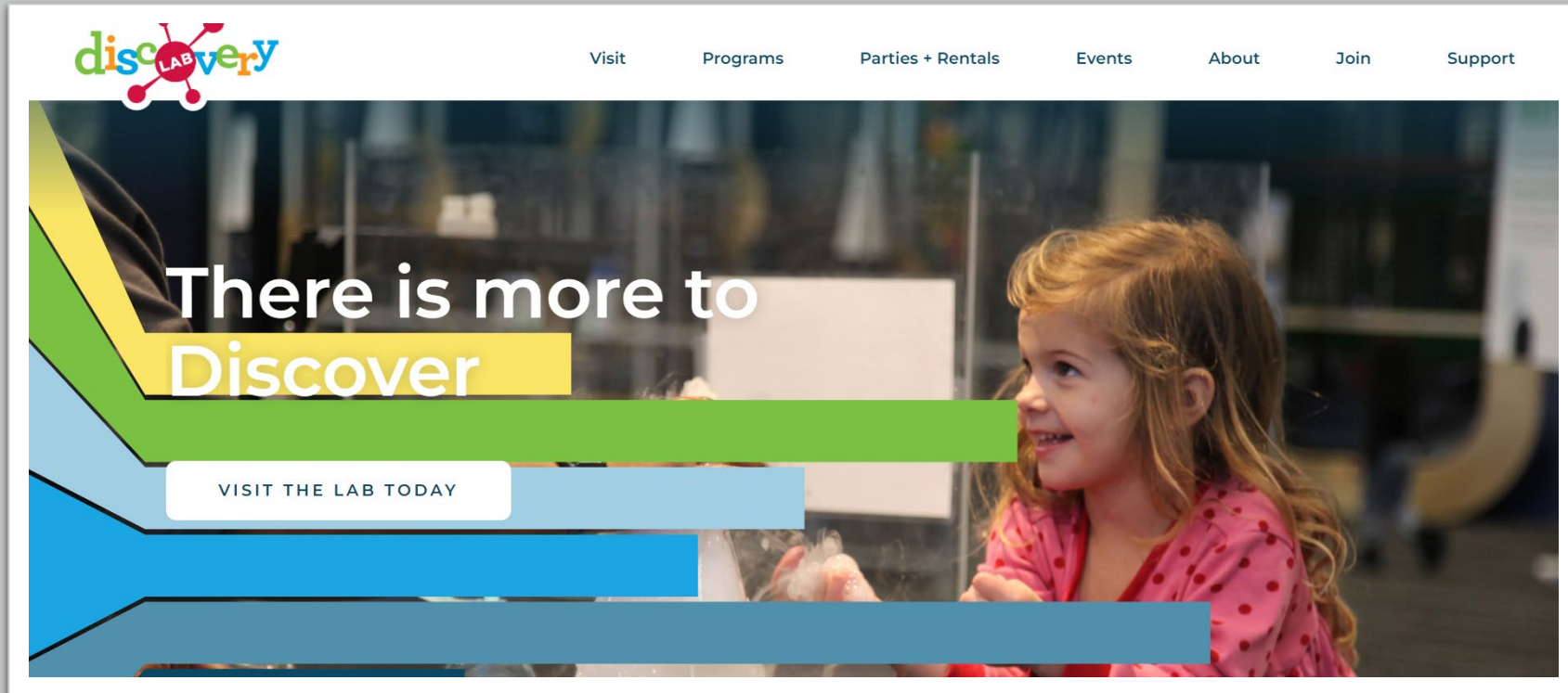
3rd Grade - Static Electrical Charge + Forces at a Distance



Education Programming



- **Traveling Exhibits**
 - Rural school districts
- **Outreach Classes**
 - Accessible Discovery
- **Special Programs**
 - Sensory Family Time
 - Introduce a Girl to Engineering
 - Exhibit Design Challenge
 - Scout Programs
 - Engineering Challenge
- **Camps**

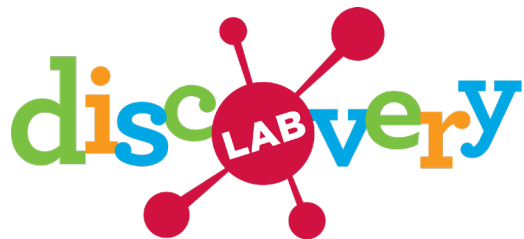


Stay Connected....

Discoverylab.org

[@DiscoveryLab](https://twitter.com/DiscoveryLab)

KKTArchitects.com





Join us at the **A4LE Regional Conference**

Tulsa | April 2023

