



Fielding
International

Designing schools where learners **thrive**

The Future of Work & Learning

Less Seat & Screen Time,
More Physical Movement &
Face-to-Face Connection

Randy Fielding & Nathan Strengé
October 8, 2:45 PM
Room CR #3/4

LearningSCAPES 2022



ASSOCIATION FOR
**LEARNING
ENVIRONMENTS**
Enhancing the Educational Experience

Essential Human Needs

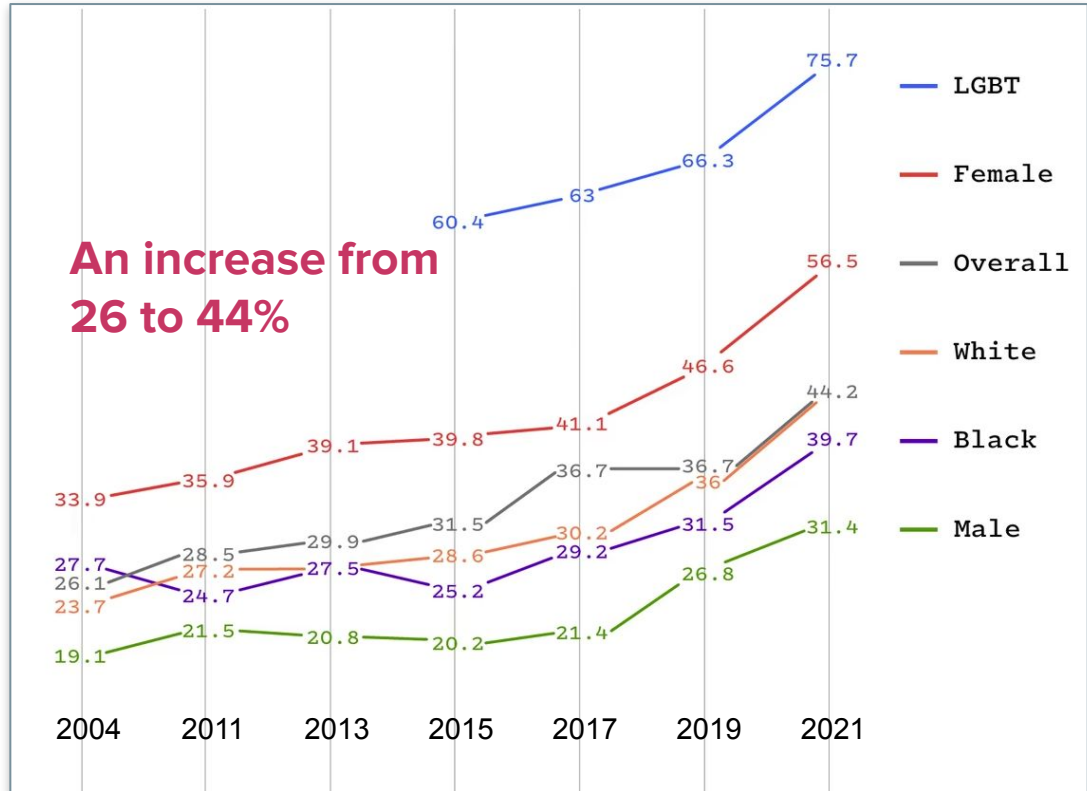
Are they being met?

“Almost every measure of mental health is getting worse for every teenage demographic, and it's happening all across the country.”

Derek Thompson

Why American Teens Are So Sad |
The Atlantic, 2022, CDC data

Percentage of High School Students Feeling Persistently Sad or Hopeless



How can we address essential human needs with design?

“Buildings will be able to instantly shift purpose to serve as a theater, gym, social center, minimizing the urban footprint and allowing cities to get more from less.”

Klaus Schwab, Founder, World Economic Forum, author, The Fourth Industrial Revolution

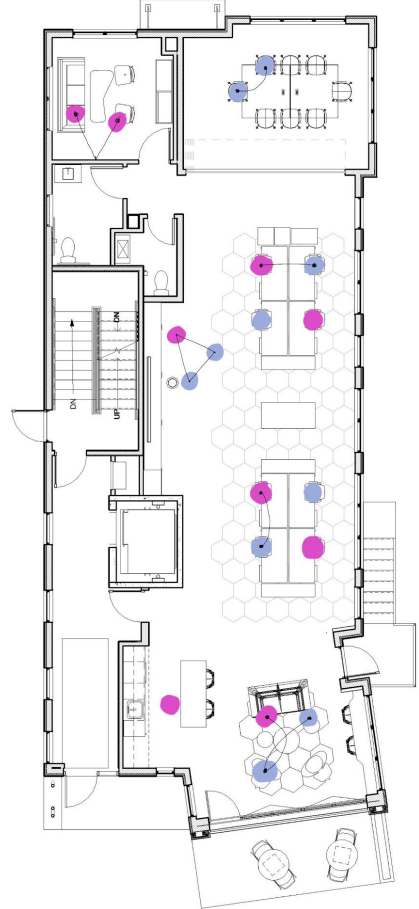


The Hummingbird Design Lab, Fielding Minneapolis Office

8-12 Person Workspace



Furniture Plan

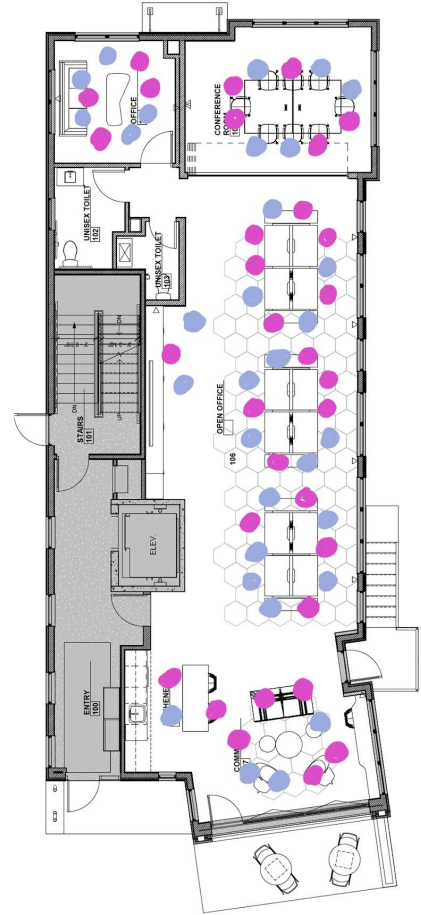


Hip-Hop Genius 2.0

Book Launch & Celebration (50 People)



Furniture Plan



Open Up Education!

Author Talk, 70 Person Gathering



Meeting the Needs for Love and Belonging



A photograph of a modern interior space. A wooden staircase with a black metal railing is visible on the left. A large, colorful abstract painting is mounted on the wall. A track lighting fixture is mounted on the ceiling. The ceiling features exposed wooden beams and a black metal railing for a mezzanine level.

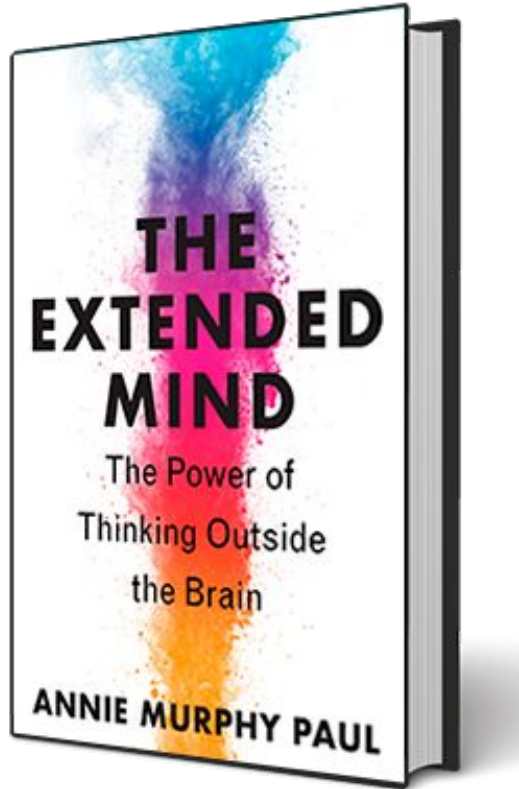
**Meeting the needs for safety,
curiosity and beauty**

**Gallery
Stair**



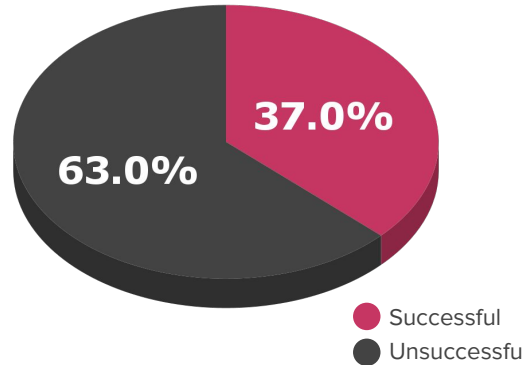
**Calming Retreat,
Mother's Room and
Small Conference**

The Need for Movement



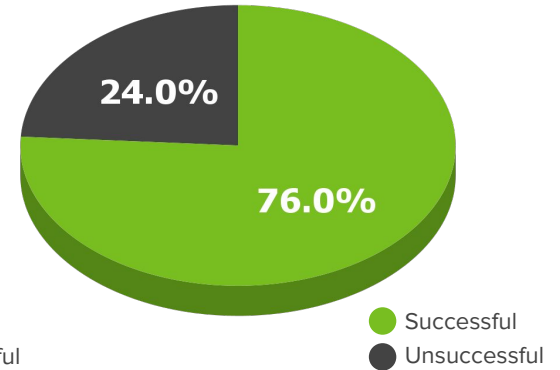
**Memorization
Recollection**

Success Rate



**Movement
Recollection**

Success Rate



“Students who incorporated movement into their learning strategy remembered 76 percent of the material, while those who engaged in ‘deliberate memorization’ recalled only 37 percent.”

Annie Murphy Paul

The Extended Mind: The Power of Thinking Outside the Brain

The Need for Movement

Standing meetings with sound diffusion and natural light



What plans can be
to a
class?

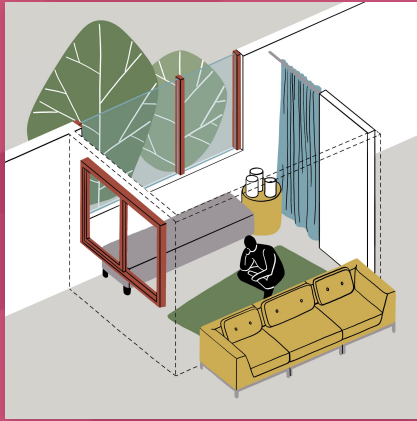


The Need for Movement & Connection to Nature

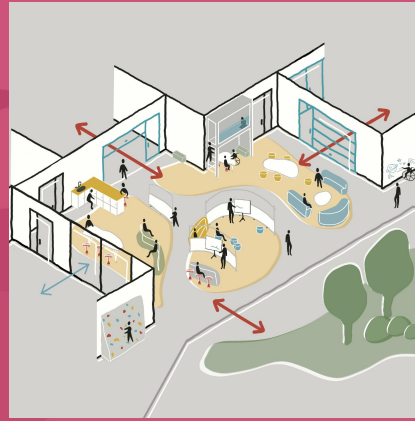


A Design Framework for Essential Learner Needs

70 freely available design patterns



Safety & Wellness



Autonomy & Opportunity



Love & Belonging



Curiosity & Mastery



Nature & Beauty



Purpose & Joy



Reflect for a moment:

Think of a place that you like to go to work, or to learn, that helps bring out your best. Try to visualize that place in your mind.

What's important about it?



Share-pair, 3 *min*

Find someone with shoes like yours and describe the place that you visualized.

Case Study:

From Minneapolis to Jeddah

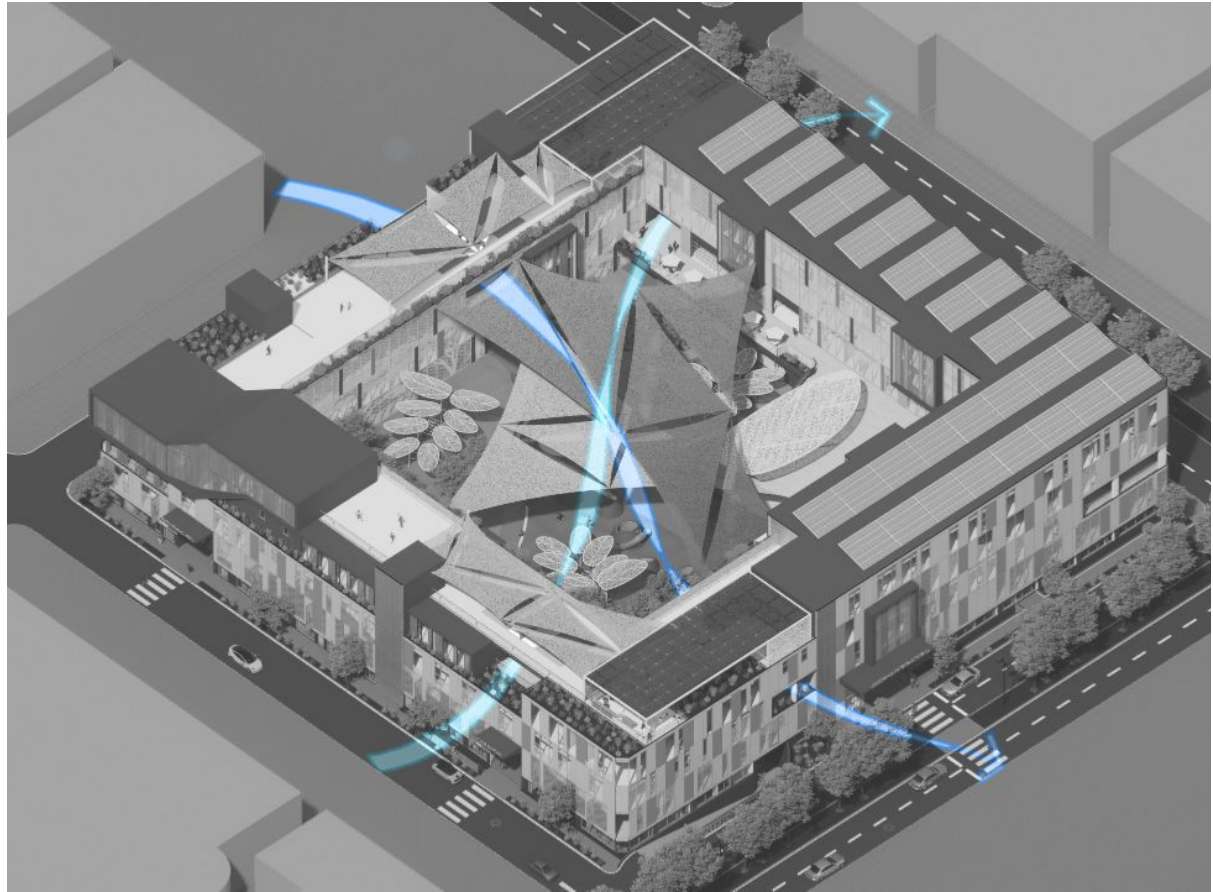
**How can designers address
essential human need and
also the needs of a
warming planet?**



Case Study

Key ideas:

- Adaptive reuse rather than landfill
- High Density but with a feeling of open space
- Making a big school feel small
- Embrace shade and outdoor space in 116 F
- Taking down fences and inviting community



CAPACITY BENCHMARKS | GSM/Student

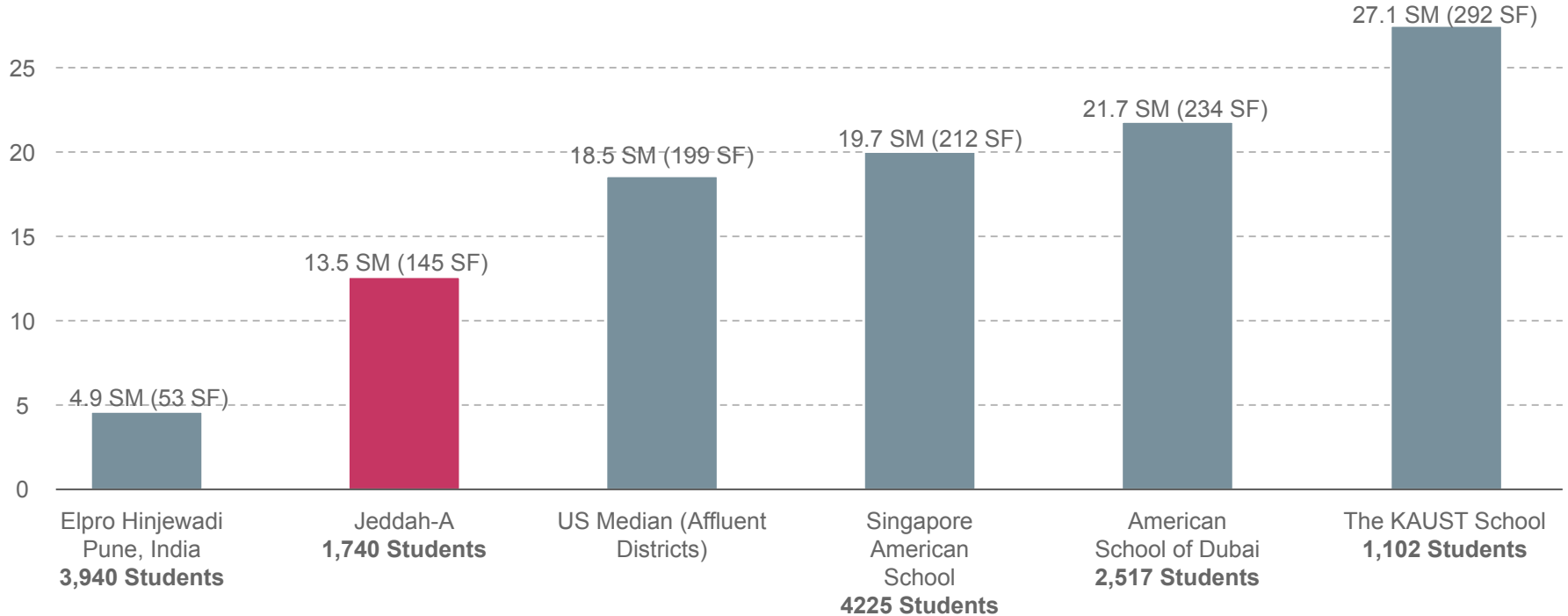
What if we right-sized the capacity based on **GSM/Student** of other international schools around the world?

Jeddah-A

Current Area: 23,506 sm

Total Capacity: 1,740 Students

GSM/Student = **13.5 sm** (145 sf) / Student



Big School, Small School Feeling

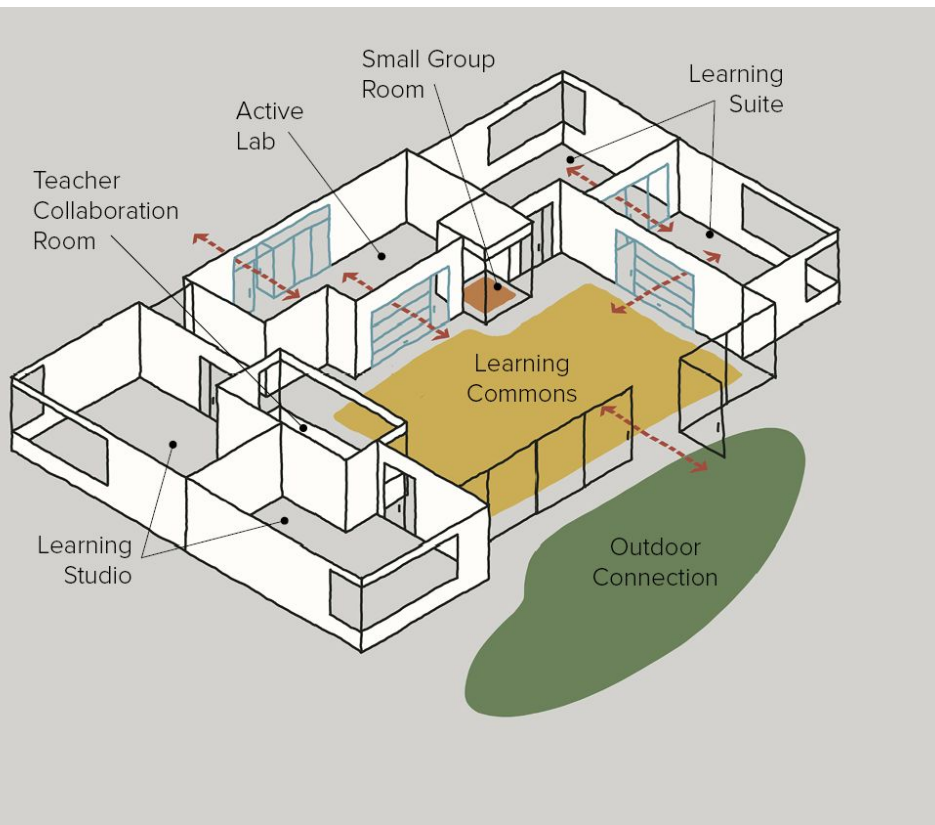


How can we improve indoor-outdoor learning in 116F?

Personalized learning and student
art everywhere

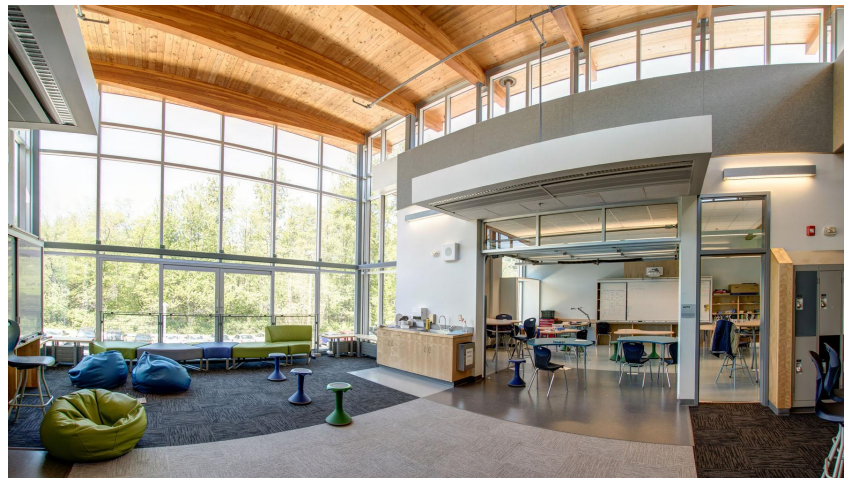


A Framework of Design Patterns

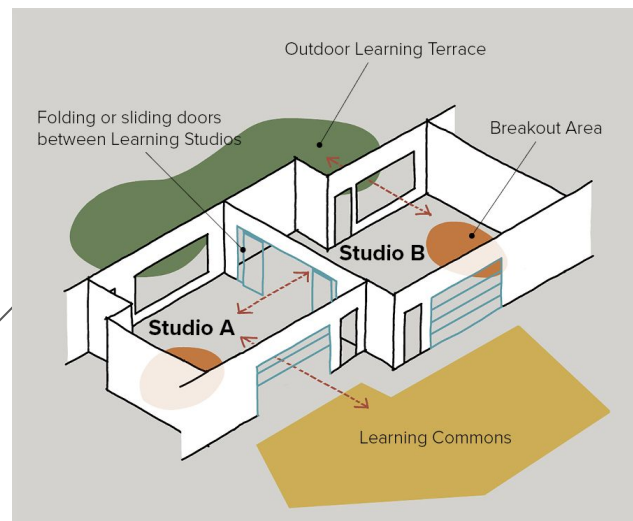
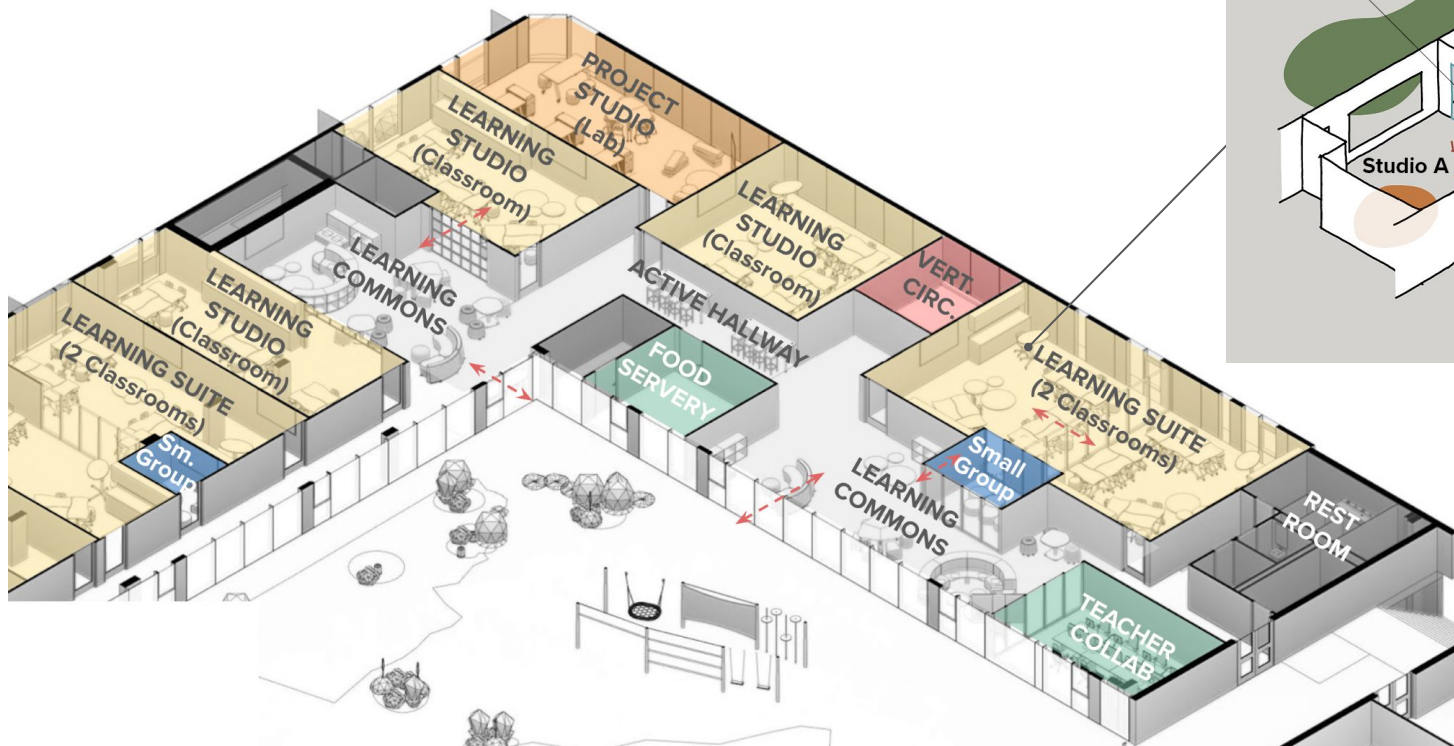


Learning Community:

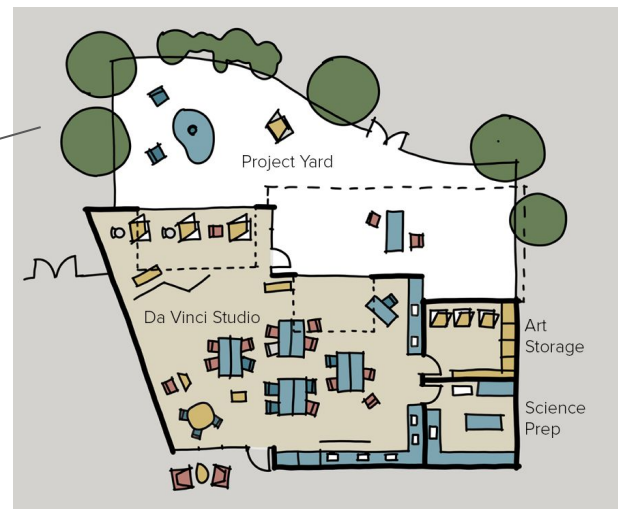
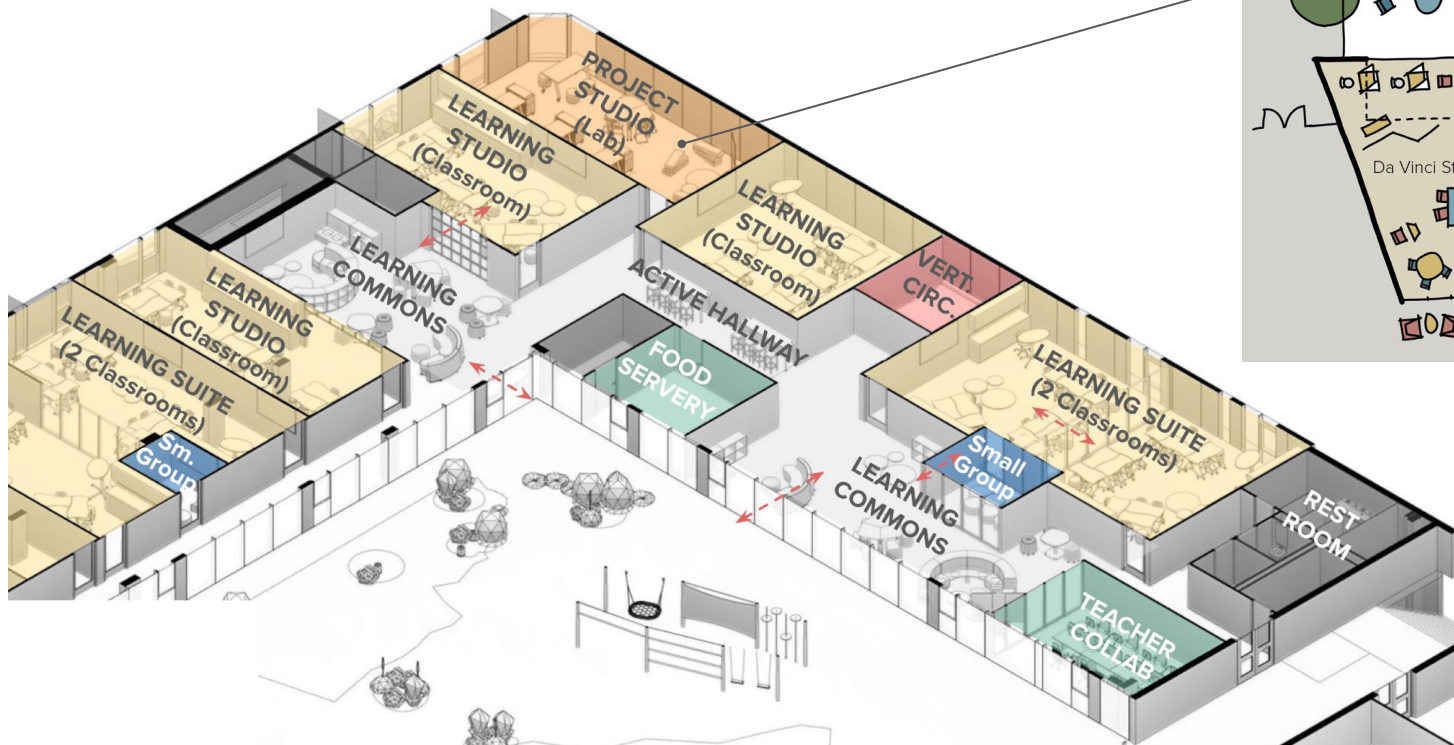
Replaces the classroom model, where one teacher engages with 20-25 students in a single confined room, with a model in which 3-6 teachers engage up to 132 students in a variety of agile spaces.



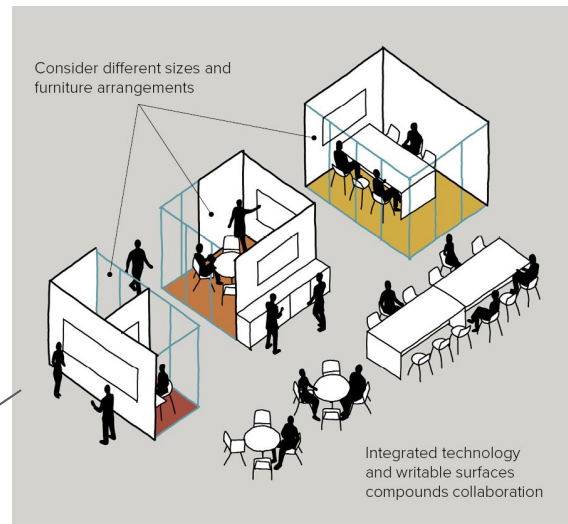
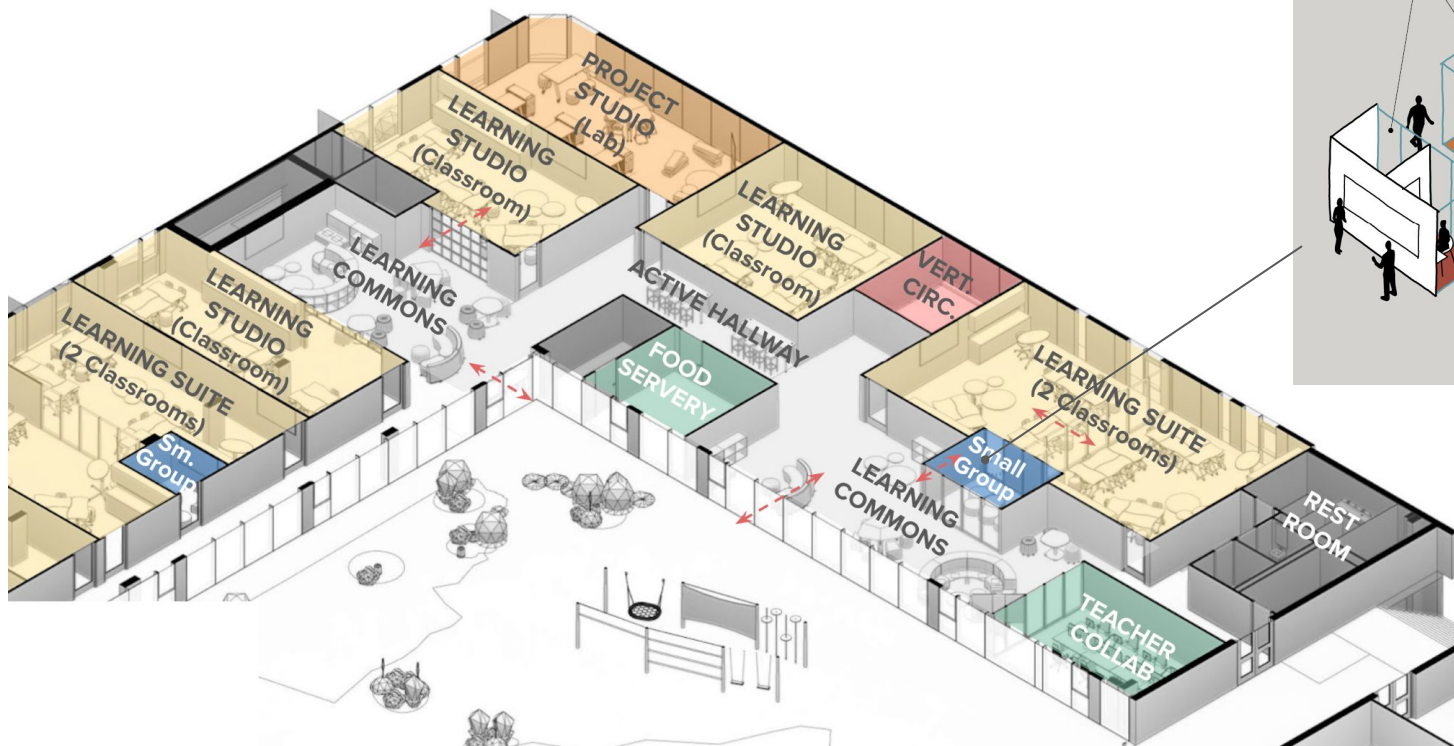
Learning Suite



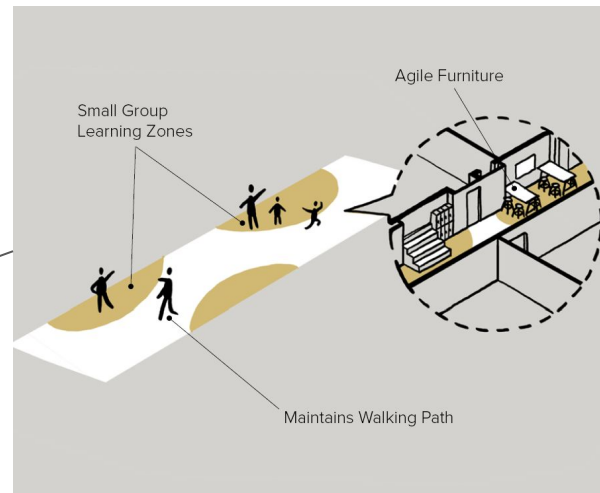
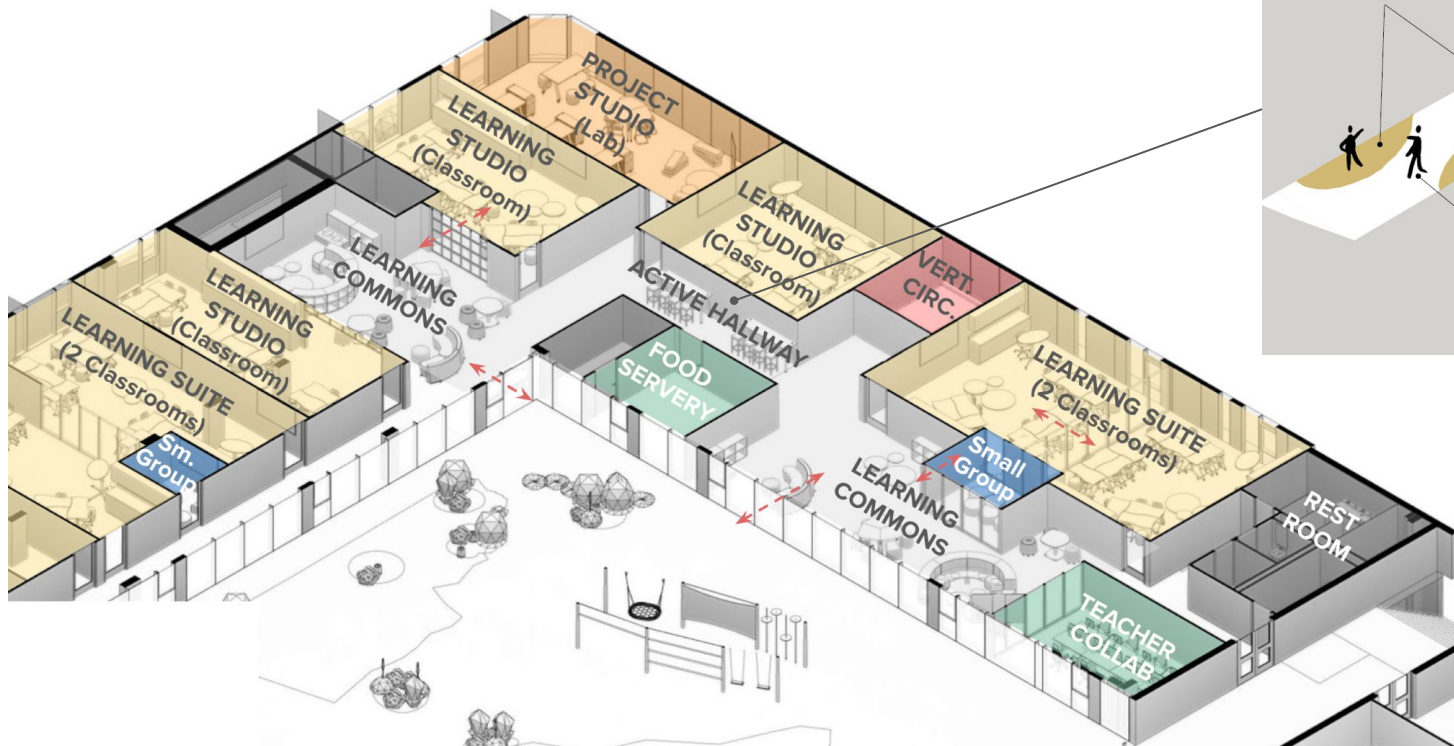
Project Studio



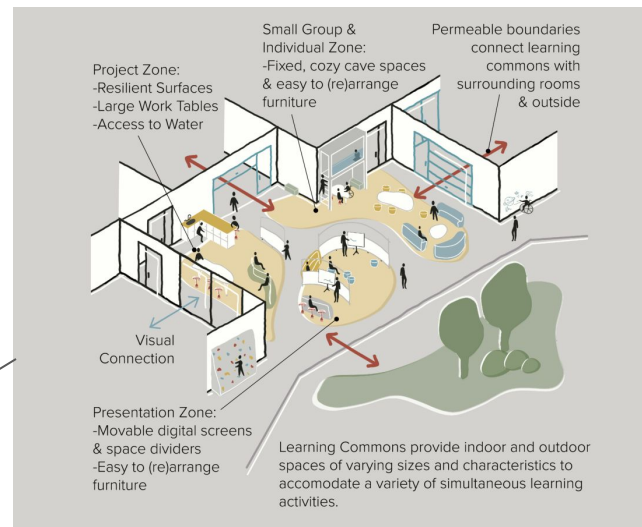
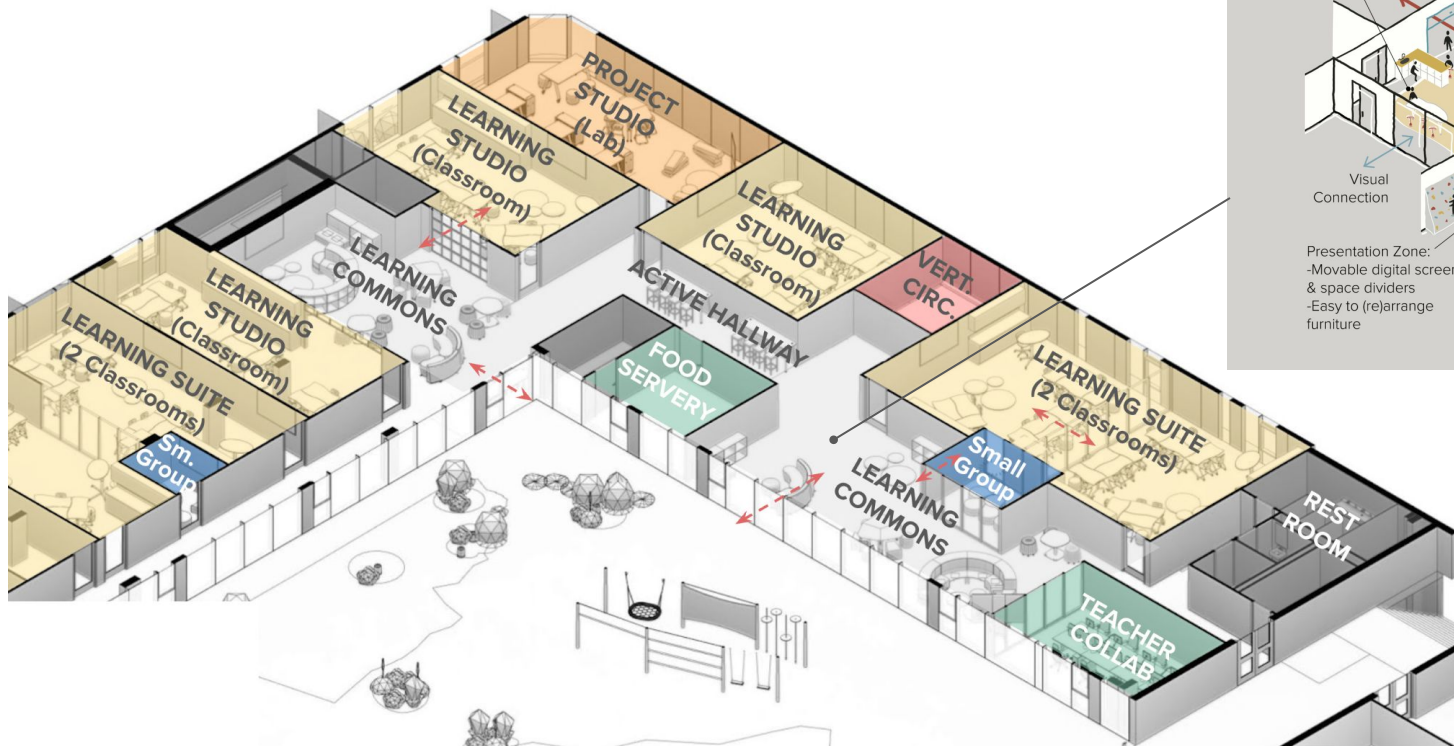
Small Group Rooms



Active Hallway



Learning Commons





What resonates from the video?

PollEV.com/fieldingintl505



What resonates from the video?

Top



Spatial Paradigms for Schools

Conventional Paradigm

The school building operates as a series of segregated, fixed learning spaces

A classroom-based approach to learning

Corridors function as arteries to get from one place to another

School safety is mostly focused on building security

Outdoor spaces are primarily used for recess and sports

Institutional, static furniture & fixtures that tend to support lots of sitting and obedience

Good lighting and acoustics are seen as a luxury

The physical environment lacks a strong sense of local ethos, often isolated from the rest of the surrounding community

Thriving Paradigm

The school building operates as a fluid environment of connected, agile learning spaces

A community-based approach to learning

Circulation areas function as diverse learning spaces that foster connectivity and collaboration

School safety takes a holistic approach that addresses building security and each student's mental, physical & social-emotional health

Outdoor spaces are seen as essential places to learn, connect with nature, and engage in physical activity

Comfortable, diverse, and agile furniture & fixtures that tends to support more movement and choice

Good lighting (especially natural light throughout the school) and acoustics are prioritized

The physical environment embodies local values and context often aiming to become more of a whole community asset





This is why we
do the work

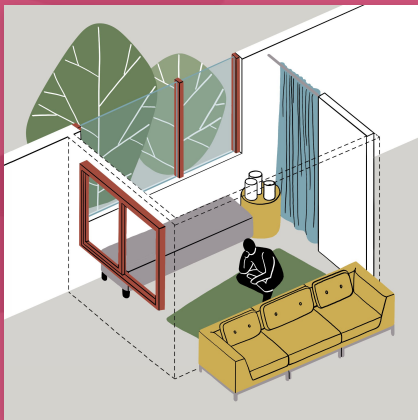
Activity:

*Choose one the six thriving elements

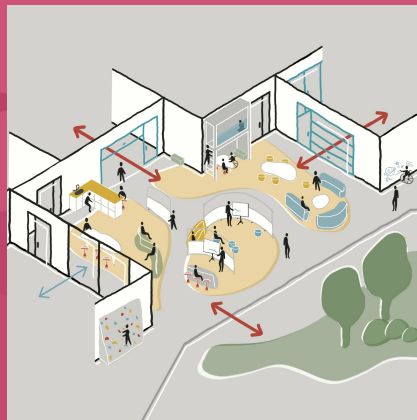
*Move to the associated poster around the room

*As a group, discuss ways we can foster your element in learning environments

*Assign a spokesperson



Safety & Wellness



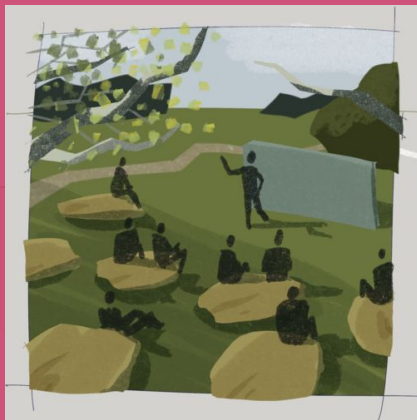
Autonomy & Opportunity



Love & Belonging



Curiosity & Mastery



Nature & Beauty



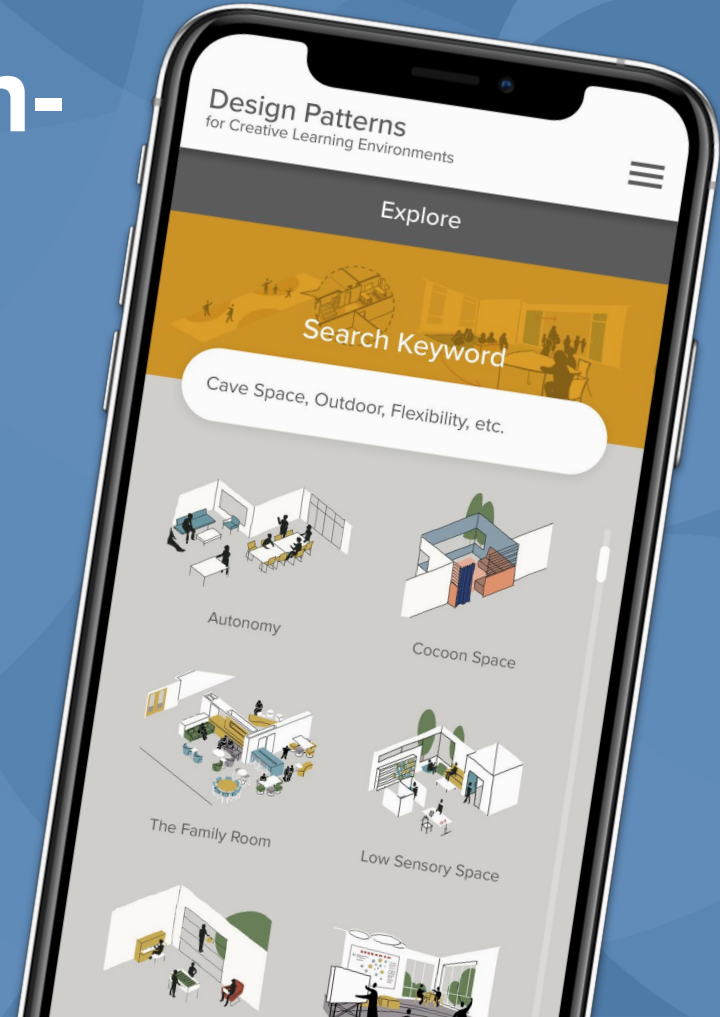
Purpose & Joy

Ask any question



A Tool for Human-Centered Design

SchoolPatterns.com





Explore



Search Keyword

Cave Space, Outdoor, Flexibility, etc.



Explore by Category

Safety & Wellness

Purpose & Joy

Curiosity & Mastery

Love & Belonging

Autonomy & Opportunity

Nature & Beauty

Safety & Wellness

Humans of sound mind, body, and spirit. Safety through physical security and emotional intelligence. Holistic wellbeing - that is having our complete personal hierarchy of needs met - is a foundation for a curious mind and compassionate soul. We want our school environments to be secure from external threats while providing active places for personal safety, health, and wellness.

[Show All](#)

Safety & Wellness

Purpose & Joy

Curiosity & Mastery

Love & Belonging

Autonomy & Opportunity

Nature & Beauty

Safety & Wellness

Humans of sound mind, body, and spirit. Safety through physical security and emotional intelligence. Holistic wellbeing - that is having our complete personal hierarchy of needs met - is a foundation for a curious mind and compassionate soul. We want our school environments to be secure from external threats while providing active places for personal safety, health, and wellness.



Sensory Control



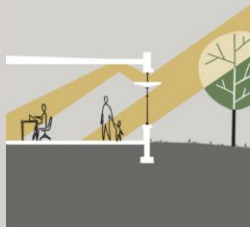
Layered Access



Quiet Zone



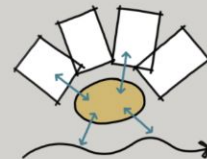
Engage the Senses



Daylighting



Considering Sound

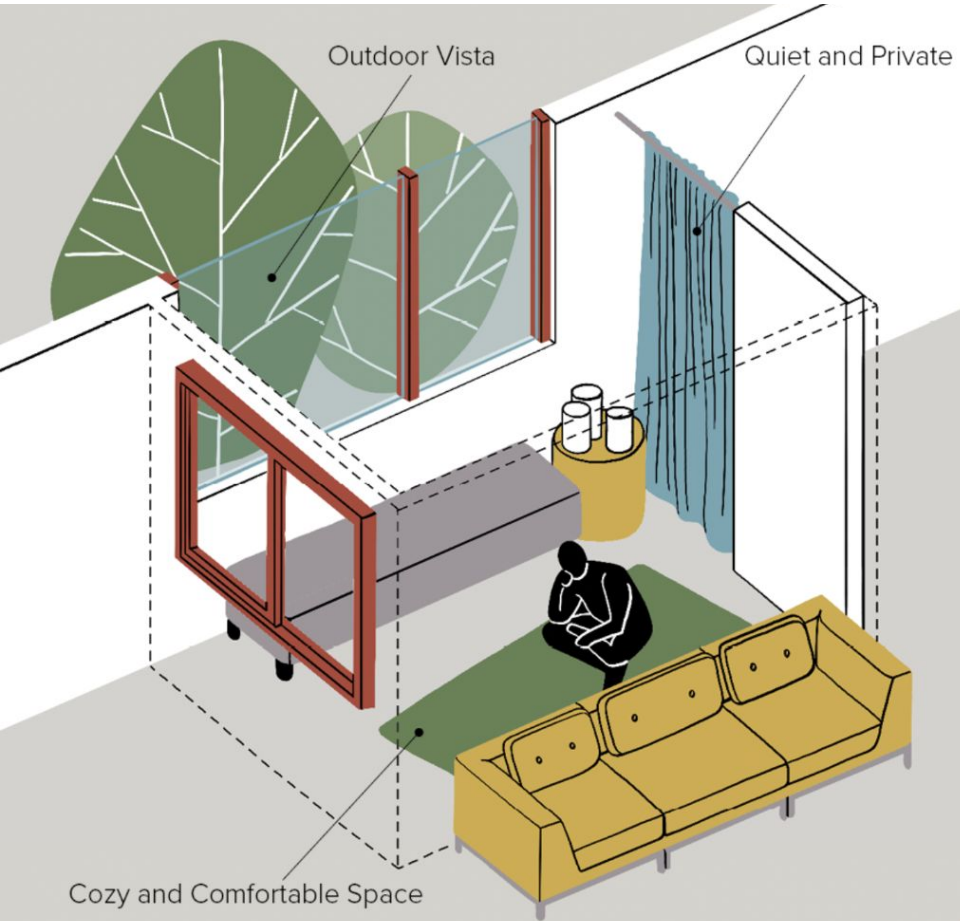


Transparency



Calming Retreat





Calming Retreat



Problem

Spaces appropriate for SEL and self-regulation need to be made accessible. Whether for meditative reflection, guided self-regulation, or simple “brain breaks,” these spaces serve as a resource for the school to build resilience and mindful practices.

Solution

Distribute dedicated spaces for individual reflection, mindfulness practices, and emotional regulation. Specific aspects of these types of spaces include the following: views to outside, comfortable seating for up to three people, space for personal movement, proximity to communal spaces for ease of access, and partitions for privacy and group activities.

Related Patterns [Student Lounge](#), [Low Sensory Space](#), [Cave Space](#)

Comfort

Color

Variety

Holistic

Acoustic

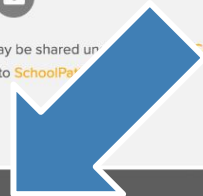
SEL

21st Century

Follow Fielding International



All content regarding Design Patterns for Creative Learning Environments may be shared up with attribution to [Fielding International](#) and a link to [SchoolPe'](#) [Commons](#) license,



[View Image Gallery](#)

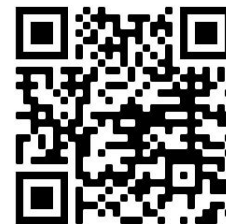
[Learn More](#)

Calming Retreat

NEST

Anne Frank Inspire Academy
San Antonio, TX





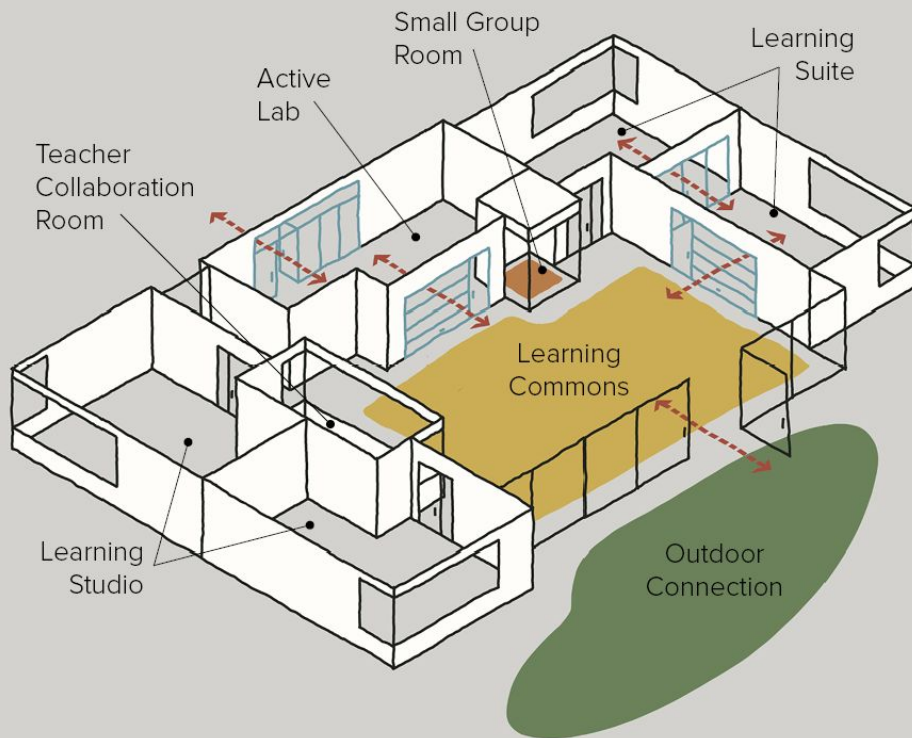
Randy Fielding Nov 11, 2021

Learning Communities Change the Paradigm

Place Based Education

Key Points

- ▶ **A Learning Community forms a spatial paradigm shift away from the conventional “cells-and-bells” classroom model.**
- ▶ **Learning Communities create a system of diverse and agile spaces that are meant to foster collaboration, creativity, and wellness.**
- ▶ **Creating a microschool using the Learning Community Design Pattern as a spatial model is a wonderful approach for a school or district wanting to be more innovative, equitable, and learner-centered.**



A Learning Community replaces the classroom model, where one teacher engages with 15-40 students in a single confined room, with a model in which 3-6 teachers engage up to 150 students in a variety of agile spaces.

Learning Community



Norma Rose Point School
Vancouver, CA

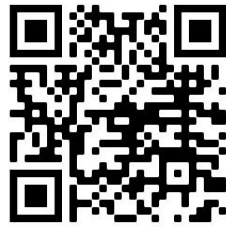
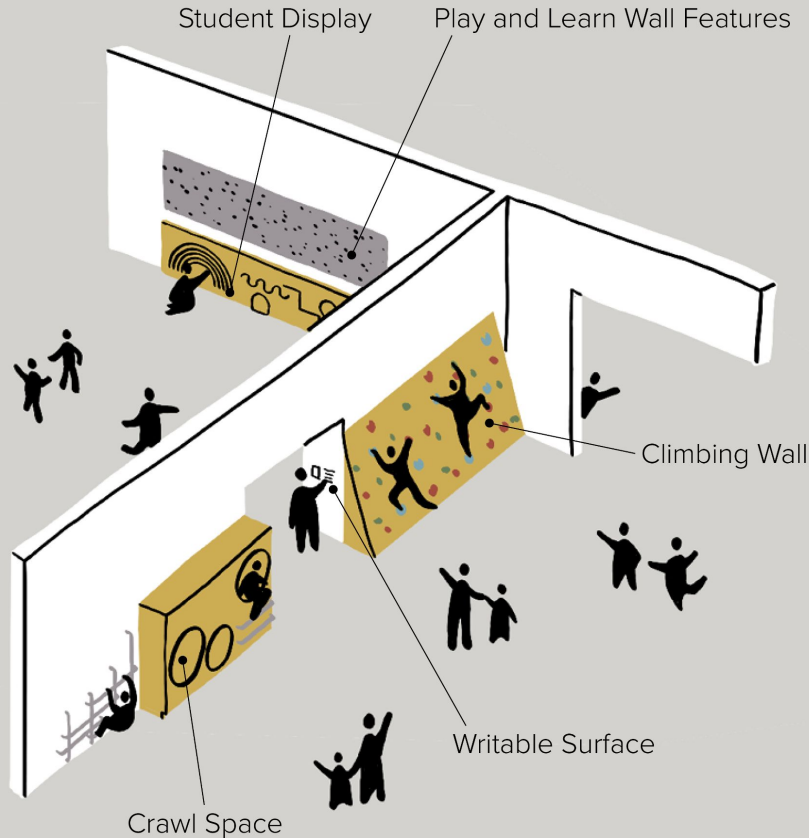
Learning Community



Schiffer Collaborative School
Sheridan, Wyoming

Learning Community





GETTING SMART 

Randy Fielding Dec 9, 2021

Learning Walls Versus Teaching Walls



TWEET



SHARE



EMAIL

Place Based Education

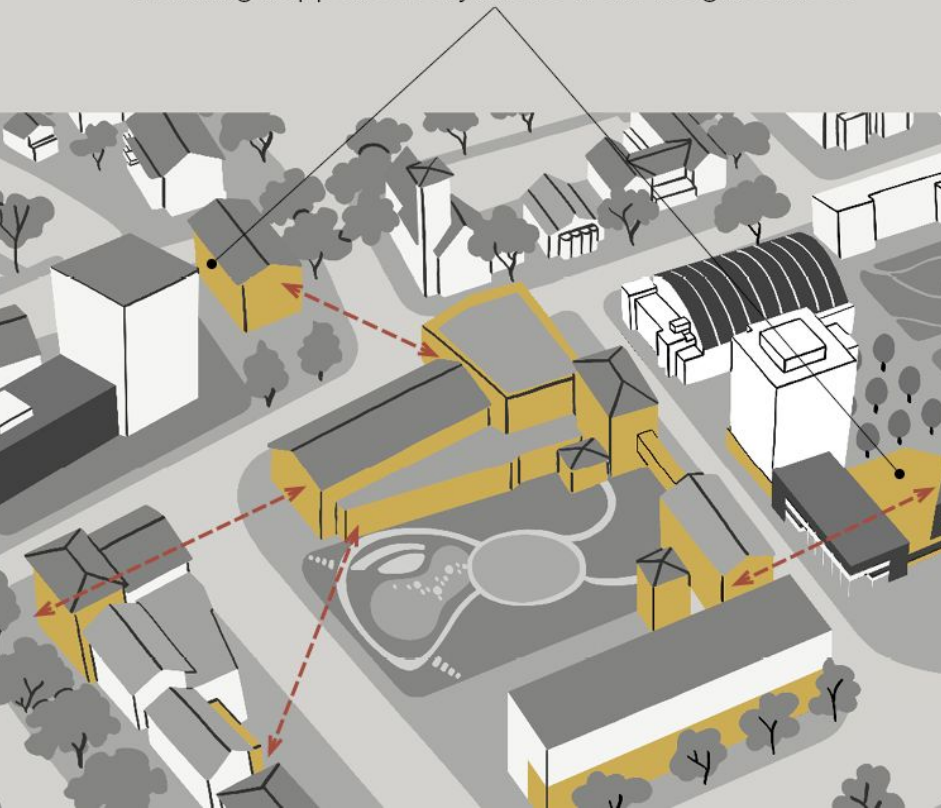
Key Points

- ▶ **Learning Walls is a Design Pattern that can help schools “Defront the Classroom”.**
- ▶ **Ways to make walls more of an asset for learning include making them writable and more permeable.**
- ▶ **Being thoughtful about what goes on (and doesn’t go on) walls is important to consider.**

Learning Walls



Learning happens everywhere in the neighborhood



GETTING SMART 

Randy Fielding Dec 2, 2021

Learning In Community— What Does it Look Like?

 TWEET  SHARE  EMAIL

Place Based Education

Key Points

- ▶ **Neighborhood as School Design Pattern** aims to make learning more authentic, relevant, and community-connected.
- ▶ If communities are willing to rethink when, where, and how learning happens, they will find many of the spaces for learning already exist.
- ▶ This builds on the emerging ecosystem work being led by Education Reimagined.

METROPOLIS

This pattern featured in Metropolis in April 2022: [You Can't Lift Up America's Schools Without Lifting Up the Neighborhoods Where They Operate](#)

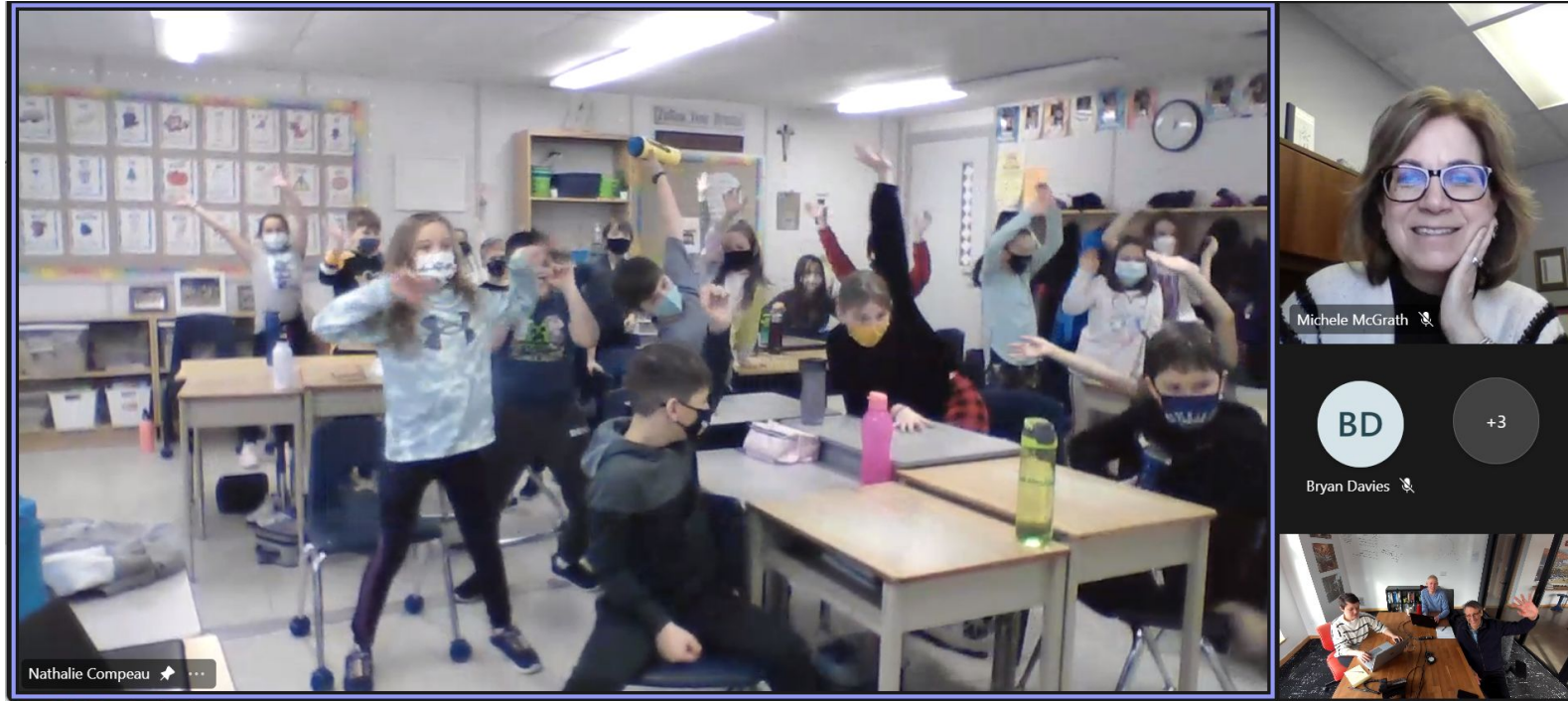




Visioning Process: 2 Case Studies

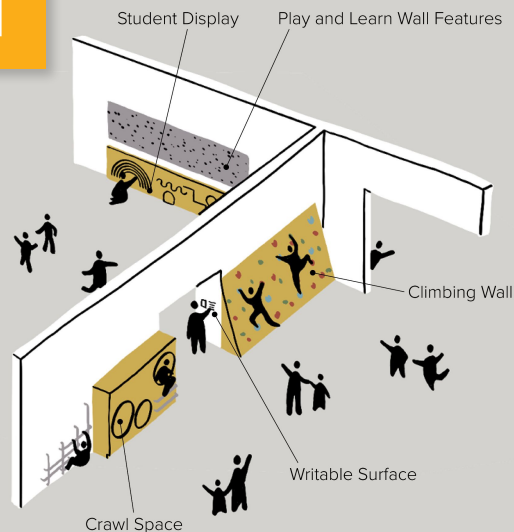
Visioning Process

Our Lady of Mount Carmel | Student Focus Groups



Which of the following Design Patterns resonate with you the most?

1



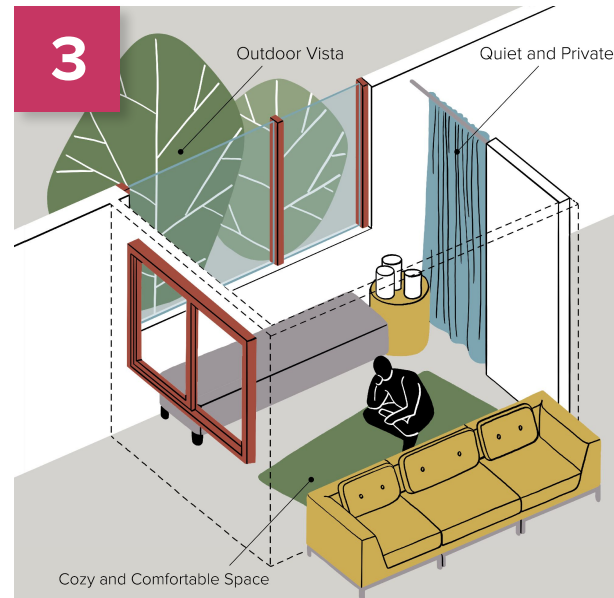
Learning Walls

2



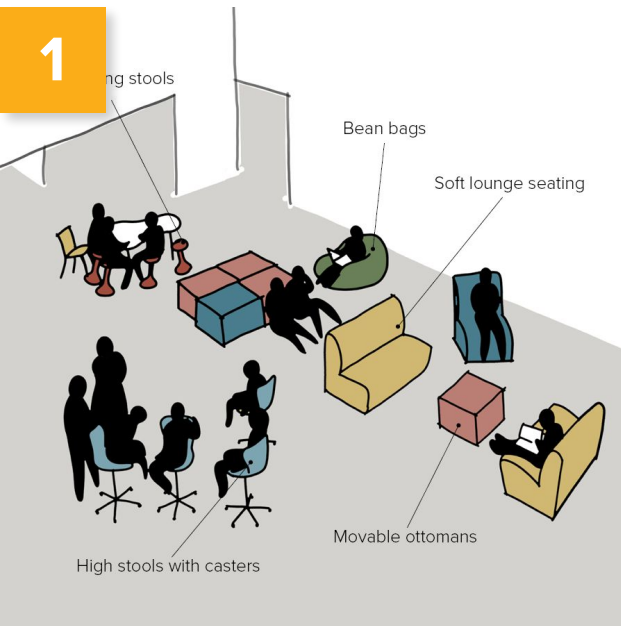
Outdoor Classroom

3

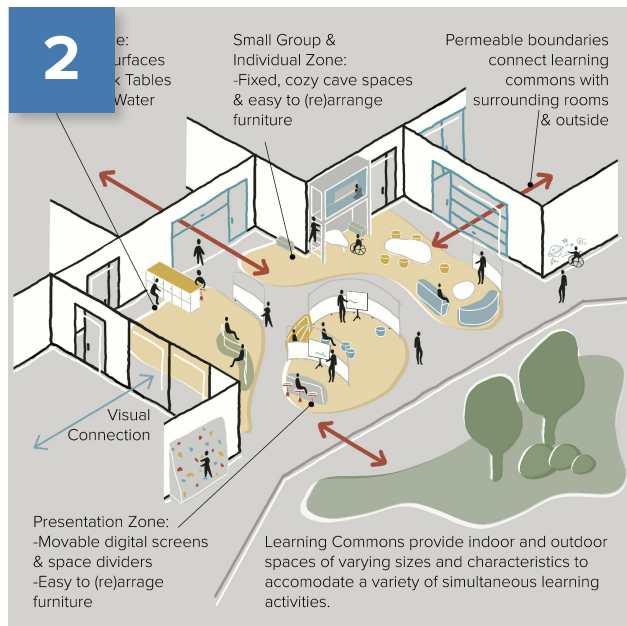


Calming Retreat

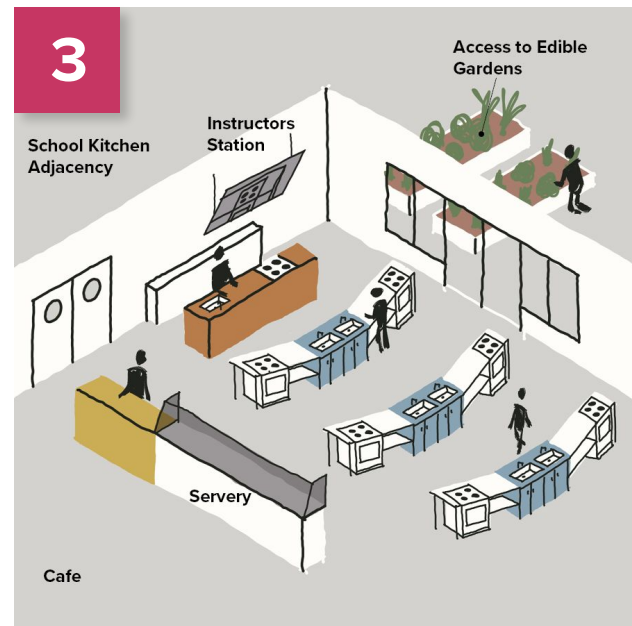
Which of the following Design Patterns resonate with you the most?



Variable Furniture



Learning Commons



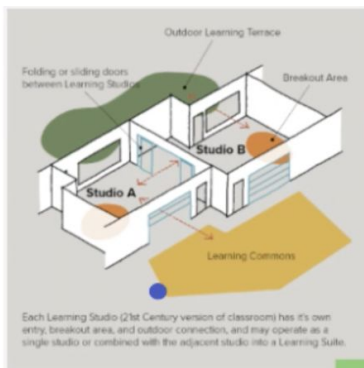
Culinary Arts Kitchen

Visioning Process

OLMC | Student Focus Groups

Teachers contributed by identifying barriers that get in the way of mission-aligned learning and exploring design patterns that would support and adapt to the unique needs of every child.



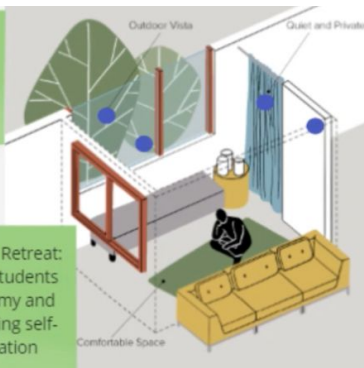


LEARNING SUITE

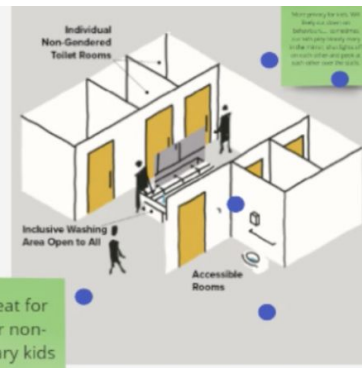
Provides a space to calm or de-escalate but still allows educators to keep an eye on the student

Calming Retreat: Giving students autonomy and promoting self-regulation

Would be great to have items built in rather than having to source/order individual sensory items for specific students (good for all)

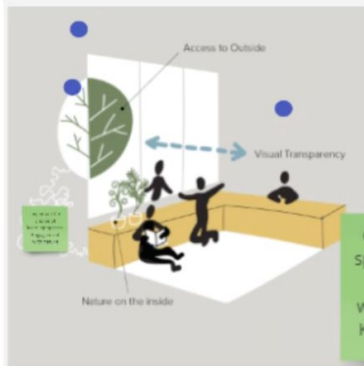


CALMING RETREAT



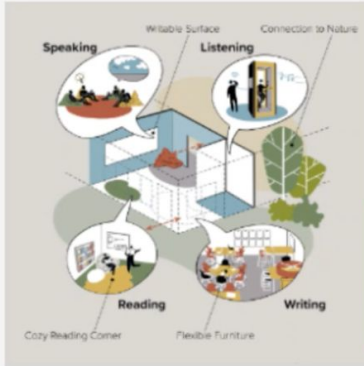
Great for our non-binary kids

HOME-LIKE BATHROOMS



INDOOR OUTDOOR CONNECTIONS

Great way to spark inquiries and wonderings in Kindergarten!



LANGUAGE STUDIO

Would love to see how language studio/suite can be utilized in French Immersion learning



LANGUAGE SUITE

Love to learn more about this space for the FI program



San Miguel High School

DISCOVERY REPORT

May 2022



When You're Here You're Family

Building on a strength of a relationship-centered school that creates welcoming places of belonging.



The Family Room

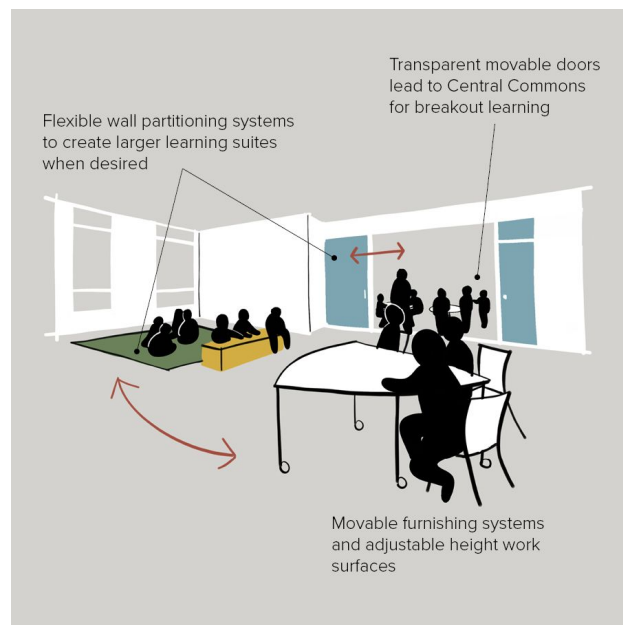


Welcoming Entry



Places to Find Myself

Creating environments where individuals can relax, reflect, have fun, and discovery who they are.

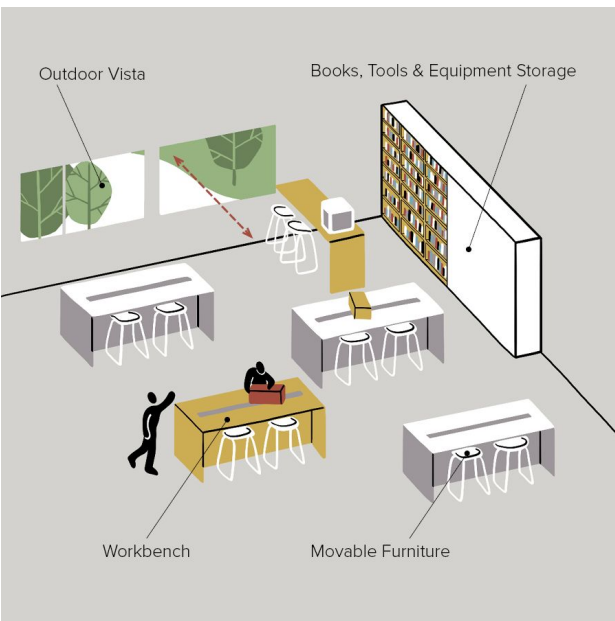


Agile Spaces

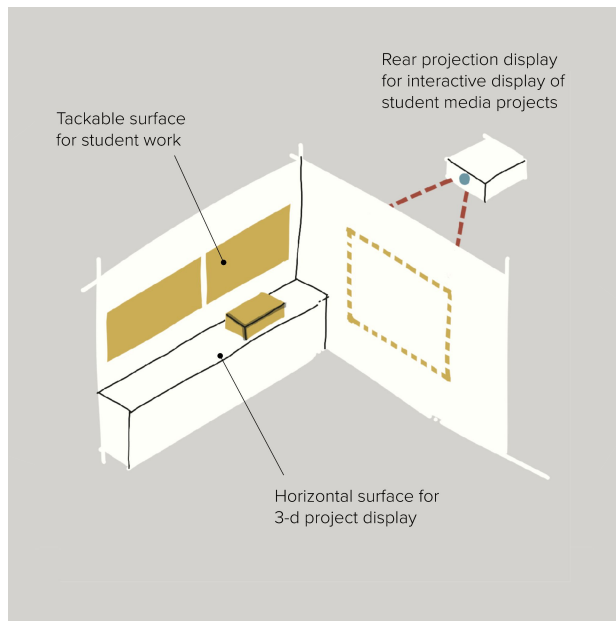


Creativity Across Disciplines

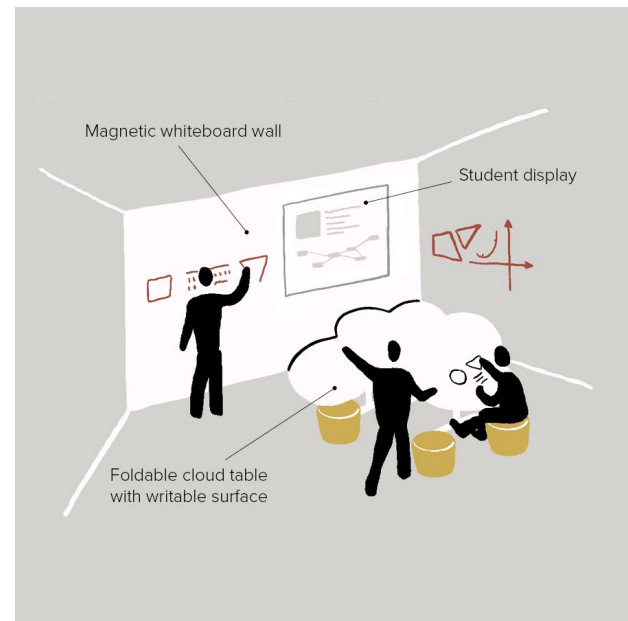
Places to design, make, and share the ways we are all creative in and across many learning domains.



STEAM Workshop



Student Display Space

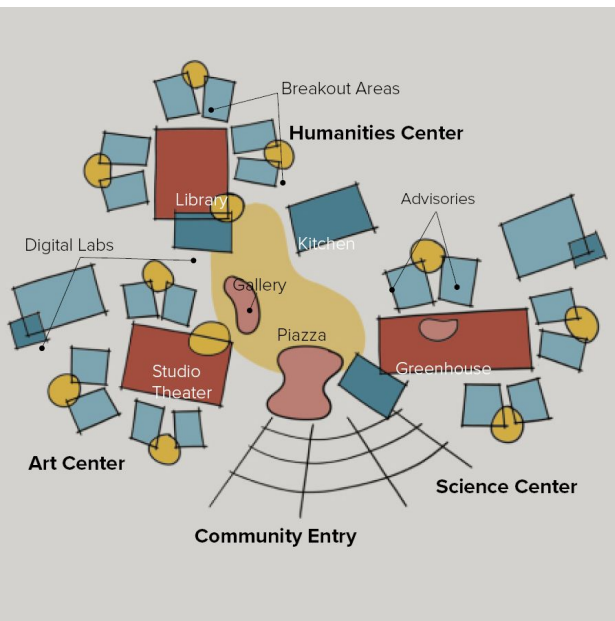


Writable Surfaces

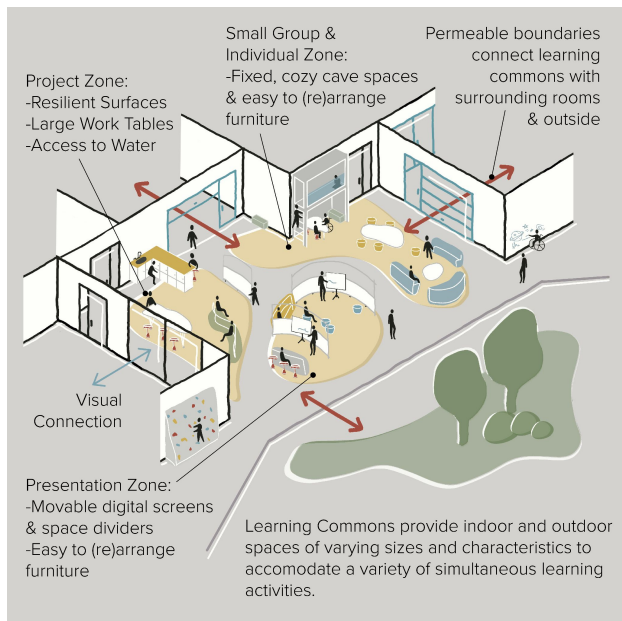


Diversity of Inclusive Spaces

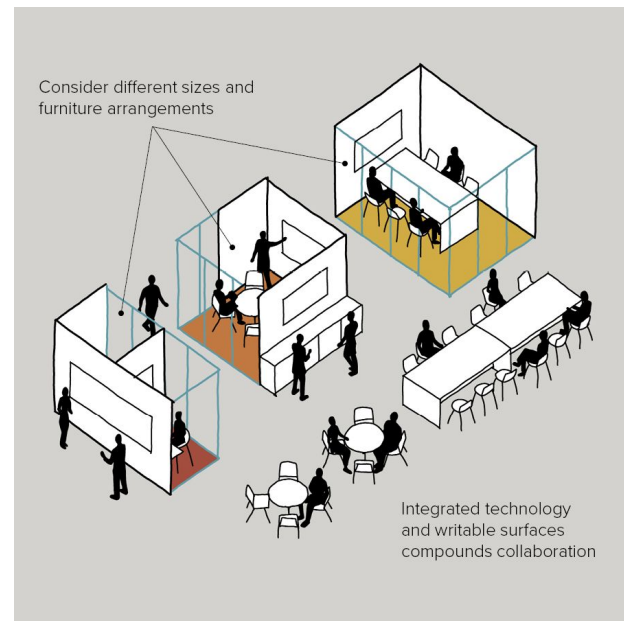
A variety of functional environments creates the conditions for every learner to have agency.



Connected Campus



Learning Commons



Small Group Rooms

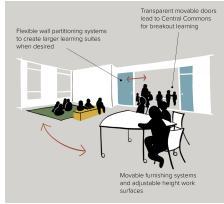
Aesthetically Beautiful Campus

The campus brings you alive through a sense of beauty, artistry, and local identity.

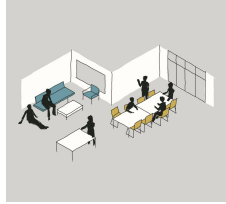


Design Patterns | San Miguel High School

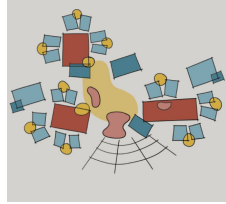
Using Human Centered Design Systems: A Future Measuring Stick



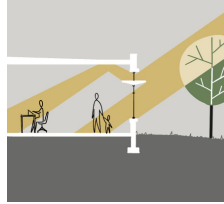
Agile Spaces



Choice in Environment



Connected Campus



Daylighting



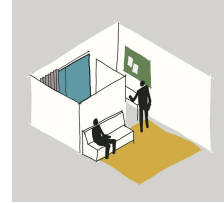
Flow of Nature



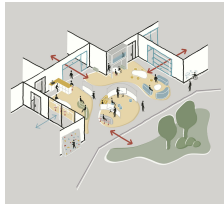
Health, and Wellness



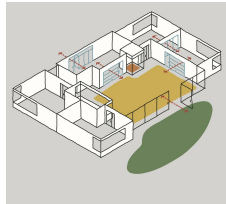
Indoor-Outdoor



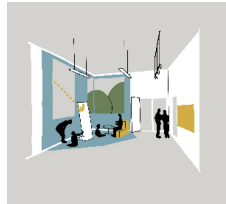
Layers of Privacy



Learning Commons



Learning Community



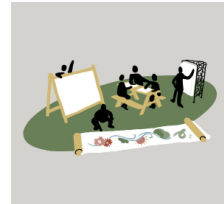
Lighting & Color



Local Signature



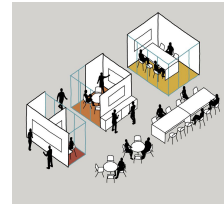
Meandering Path



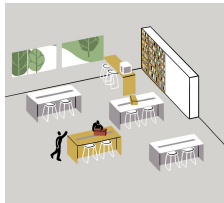
Outdoor Art



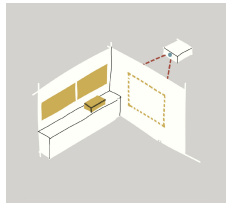
Presence of Water



Small Group Rooms



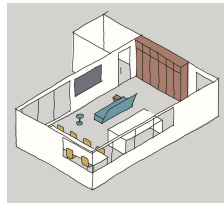
STEAM Workshop



Student Display



Student Lounge



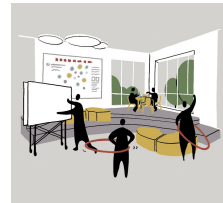
Teacher Collaboration



The Family Room



Welcoming Entry



Whole Body Learning

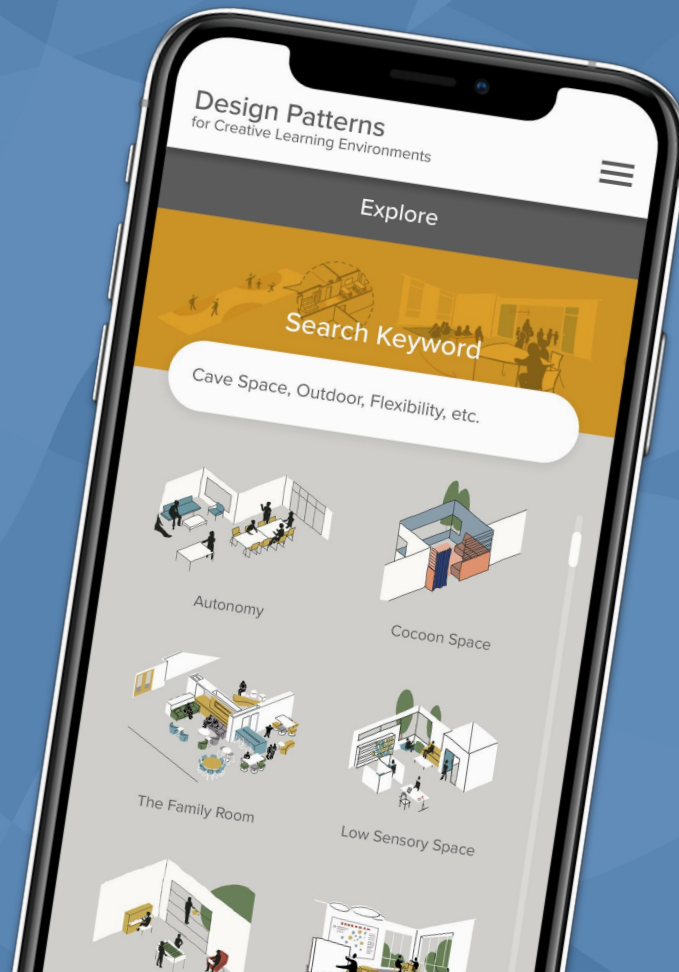


Writable Surfaces



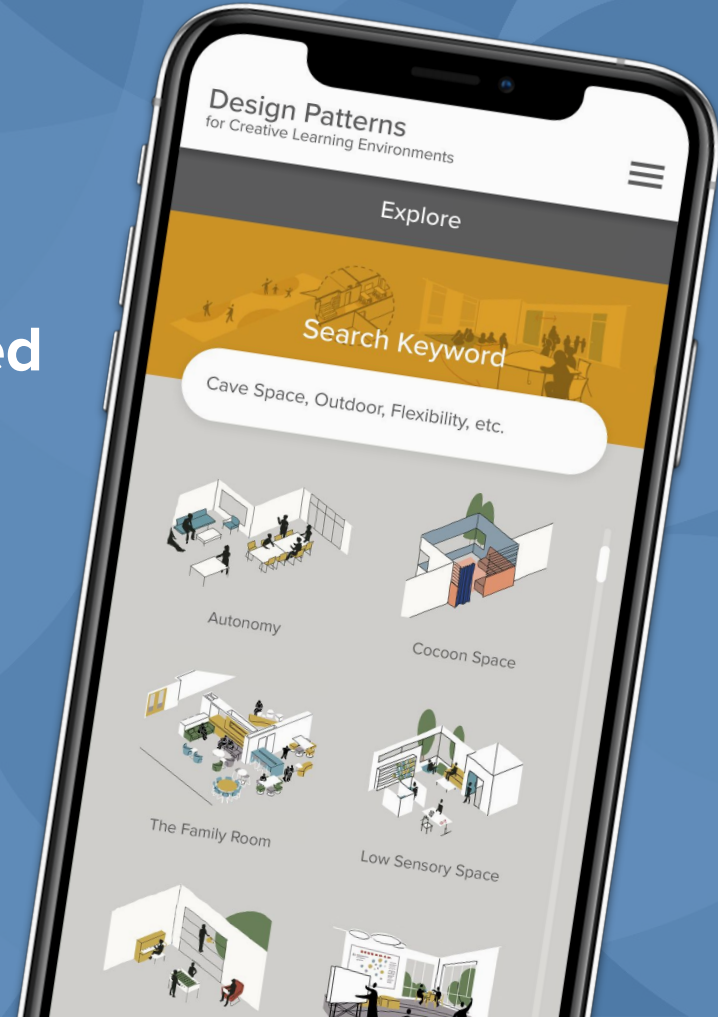
Go Explore

SchoolPatterns.com



A Call to Action

How might you be able to use this tool to help create a shared design language in your context?



Ask any question





Fielding
International

Designing schools where learners **thrive**

We are one team of architects and educators, co-creating across five locations, all dedicated to making the world better by improving learning environments.



Randy Fielding, AIA

Founding Partner, Fielding International
randy@fieldingintl.com



Nathan Streng

Sr. Learning Designer
Fielding International
nathan.streng@fieldingintl.com

Connect with us on LinkedIn

See 15 recent publications by Randy and Nathan at:
gettingsmart.com/author/randy-fielding/

Minnesota • Michigan • Rhode Island • Maryland • Singapore

Create a shared language at
SchoolPatterns.com



Learn more about us at
FieldingIntl.com