

Investing in Learning for ALL  
to build leaders of tomorrow





# Objectives

1. Academy Overview
2. Impact on Learning
3. Design Approach
4. Design Outcome
5. Q&A

Martha Raines Academy

# Site location map



# Campus Location: Katy, Texas



# Site Adjacencies



- Located on a campus which houses Miller CTE center, OAC building and STEAM center
- Adjacency with the stadium parking
- Potential for its own identity
- 500 student capacity at new campus
- 48,000 square feet

# District Data

**Student**  
🎓 **92,444**  
**Enrollment**

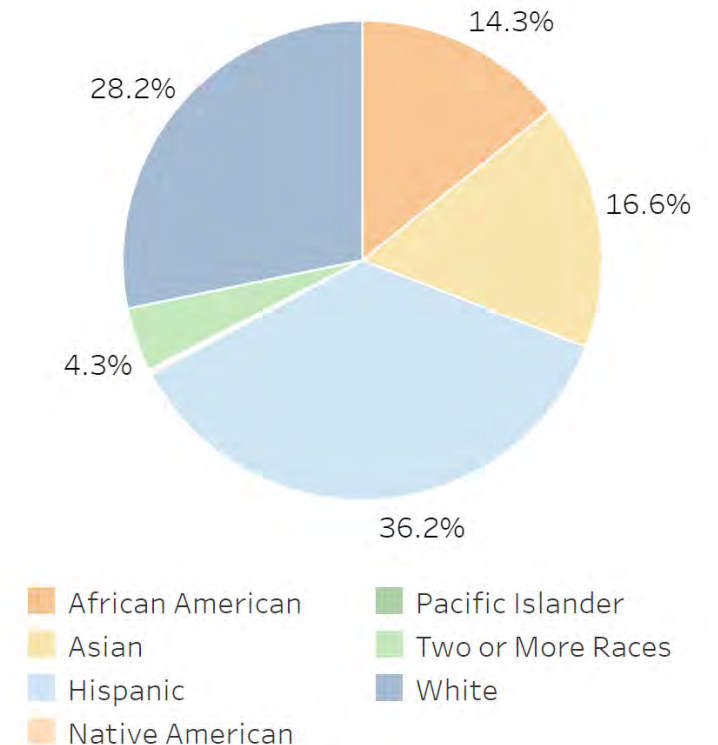
**District**  
📖 **74**  
**Schools**

**Budget**  
\$ **1.204B**  
**Expenditures**

**Growth**  
🌱 **90,979**  
**Next Year**

Explore data using the buttons above and navigation to the left.

	#	%
African American	13,218	14.3%
Asian	15,413	16.6%
Hispanic	33,580	36.2%
Native American	211	0.2%
Pacific Islander	108	0.1%
Two or More Races	3,983	4.3%
White	26,168	28.2%
<b>Grand Total</b>	<b>92,681</b>	<b>100.0%</b>



Enrollment updated monthly. Last updated: 9/1/2022

# District Data

**Student**  
🎓 **92,444**  
Enrollment

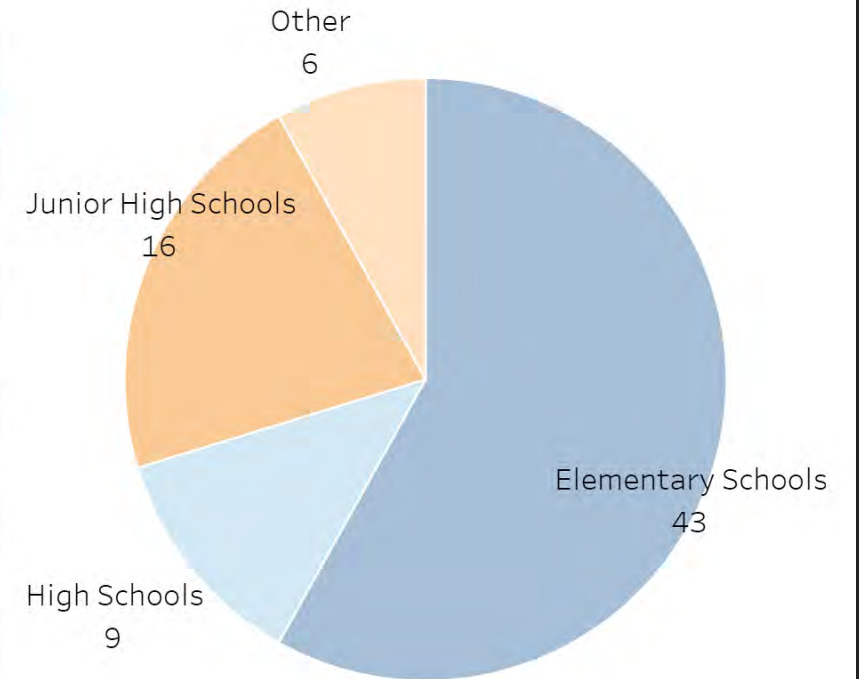
**District**  
📖 **74**  
Schools

**Budget**  
\$ **1.204B**  
Expenditures

**Growth**  
🌱 **90,979**  
Next Year

Explore data using the buttons above and navigation to the left.

Graduation Rate	94.2%
Dropout Rate	0.6%
At Risk Rate	40.1%
Bilingual/English as a Second Language	18.4%
Gifted & Talented	8.1%
Title 1 Programs	18.4%
Advanced Course/Dual Enrollment Completion	47.9%
% of Students Taking AP Exams	36.6%
% of AP Exams with a Score of 3 or Higher	83.1%
Economically Disadvantaged	45.1%
College and Career Ready Graduates	76.4%
Limited English Proficiency	22.1%
Graduates Enrolled in TX Higher Ed	60.2%
Special Education	14.3%





# History and Vision

NEVER GIVE UP

EXPLORE THE POSSIBILITIES

STAY MOTIVATED



*Raines Academy creates innovative learning experiences and provides unparalleled growth opportunities to inspire our students to create a better tomorrow.*



- Raines Academy is a Katy ISD alternative high school campus designed to assist at-risk, over-aged and off-cohort students meet graduation requirements.
- The campus culture is centered around meeting students where they are and providing flexibility to address their unique needs.



# Programs & Partnerships

## Katy ISD student work program

Students interested in working part of their day in a Katy ISD temporary position can do so while still attending Raines to meet academic requirements. This program allows students, upon graduation, the opportunity to apply for full-time employment in Katy ISD where they could earn a full-time salary, benefits and TRS service credit.

GROWING TODAY, LEADING TOMORROW

GRADUATES

*Flexible hours, students build their own schedule, students study at their own pace, opportunities to work while studying*

**Raines Academy**  
Commentary from  
Work Program staff  
and student





# Programs & Partnerships

## Dual Credit (August 2023) -

Students will have the opportunity to take dual credit courses with the opportunity to earn an associates degree before completing HS graduation requirements.

## CDL Licensing (August 2023) -

Students (12<sup>th</sup> interested in obtaining a Class A & Class B CDL license will be able to apply for the program. Upon turning 18, eligible students may test for their CDL license.

## CTE Level 1 Certificates (August 2023) -

Students will have the opportunity to attend HCC or Texas State Technical College to earn a CTE certificate in an area of study. Flexible scheduling provides students the opportunity to do this outside of the traditional instructional day.



## ENROLLMENT

- Students may apply to Raines. Open house is held the last Tuesday of each month.
- Counselors may refer eligible/interested students.
- Applications are reviewed every Monday and enrollment increases each week.
- Eligible reasons to apply/refer include off-cohort, overage, parenting, homeless, anxiety and other extenuating circumstances.

## DEMOGRAPHICS

- Previous location of Raines Academy was housed in the District's alternative discipline placement facility.
- The stigma associated with housing Raines at this location implied all students were at-risk due to behavior.
- The new location of Raines Academy has launched a rebranding and excitement for how Raines Academy now supports at-risk students for many reasons.

**Student Demographics and enrollment**



Raines Academy offers flexible scheduling via the Learning Management System – Canvas.

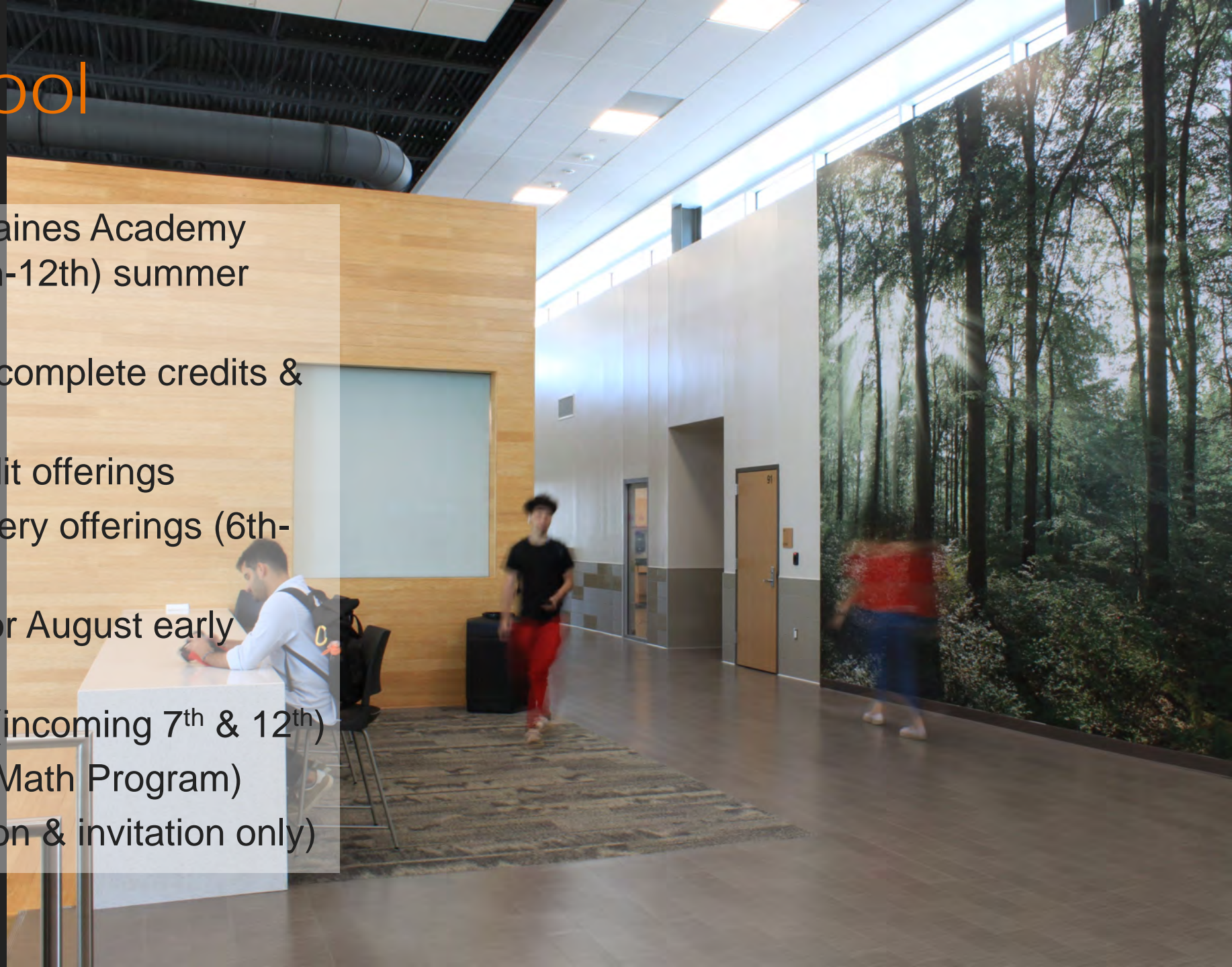
- Katy Virtual School (KVS) online courses support original credit offerings.
- Edgenuity online courses support credit recovery offerings.
- As a result, staff is trained to utilize Canvas which houses all online course offerings with the academic support of an in-person certified content teacher.
- The instructional model is closely aligned with the Quality Matters organization and teachers are supported to earn their QM certifications.

## Staff & Student Training

# Summer School

Effective Summer 2022, Raines Academy supports all secondary (6th-12th) summer school programming:

- Seniors on schedule to complete credits & graduate in August.
- KVS online original credit offerings
- Edgenuity Credit Recovery offerings (6th-11th)
- College & Career Lab for August early admission
- Creative Writing Camp (incoming 7<sup>th</sup> & 12<sup>th</sup>)
- KAMP (Katy Advanced Math Program)
- Geometry PAP (In-person & invitation only)





# Lifestyle Fitness Program



Raines Academy houses a state-of-the-art fitness center offering students an innovative PE option or a flexible opportunity to work-out. Staff also have access to the fitness center after hours and summer.

# Flexible Lunch Program



- Grab-N-Go breakfasts: 7 a.m. – 8:30 a.m.
- Grab-N-Go lunches: 11 a.m. – 1:00 p.m.
- District Food Service provides flexible meals
- Pending: Meal Vending Machines



- Raines Academy offers flexible original credit courses for Miller students.
- Miller CTC offers certification pathway courses for RA students.
- Enhanced flexibility of course offerings, obtaining certifications and scheduling of practicum/intern hours.
- Enhanced pathway for academic and personal success with post-secondary pursuits.

## Miller CTC and Raines Partnership



Raines Academy

# Teacher Feedback

Raines Academy

# Planning and Design

# Bond vs Vision

- Original scope to add to existing building
- Need for new stand-alone campus
- Fitness Center and locker rooms
- Flexible central commons
- Connection to programs at Miller CTC
- Outdoor play area
- Furniture package
- Graphic design





# Timeline

- Project Tour January 2020
- Budgeting through March 2020
- Covid Pandemic March 2020
- Design Kick off April 2020
- Project Bid October 2020
- Construction November 2020 to December 2021
- Katy ISD move in Winter break 2021
- Final project cost: \$11.2 million construction and \$13.6 total project

# PROGRAM

## Preliminary Program SUMMARY

<b>ADMINISTRATION</b>			<b>5,300 SF</b>
			1,850 Front Office Suite + Secondary Entries 500 Clinic 1,100 Guidance/Counseling 1,850 Educator Workstations
<b>INSTRUCTION</b>	<b>20</b>	<b>Clrms</b>	<b>18,520 SF</b>
	14		11,200 Core Content
	1		1,625 Science / Art
	1		1,375 Digital/Computer
	3		3,000 Multi Discipline
	1		800 LOTE 520 Small Group / Flex / Storage
<b>FLEX LAB</b>	<b>1</b>	<b>Clrms</b>	<b>1,250 SF</b>
	1		1,250 Flex Lab
<b>FINE ARTS</b>	<b>0</b>	<b>Clrms</b>	<b>250 SF</b>
	0		250 Visual Arts (Clrm w/ Science)
<b>STUDENT UNION</b>			<b>6,070 SF</b>
			1,950 Media Center 4,120 Dining/Commons
<b>FITNESS</b>	<b>2</b>	<b>Clrms</b>	<b>3,620 SF</b>
	1		1,500 H. Fitness Exercise Room 500 H. Fitness Classroom
	1		1,620 Dressing/Locker Rm (Students + Staff)
<b>BUILDING SUPPORT</b>			<b>4,310 SF</b>
			3,090 Bldg Systems Spaces 260 Custodial 960 Restrooms/Laundry/Pantry
<b>TOTAL USEABLE SF</b>			<b>39,320 USF</b>
U:G actual SF based on desgin/layout			1.30 U:G Mark-up Factor
<b>TOTAL GROSS SF</b>			<b>51,116 GSF</b>
			<b>23 Crms</b>

## Student Capacity Data

Max Cap: **585** Des Cap: **512**  
Average (Max, Des Cap): **548.4**

<b>Max Cap:</b>	<b>515.0</b>	<b>Des Cap:</b>	<b>450.6</b>
25	350.0	0.875	306.3
25	25.0	0.875	21.9
25	25.0	0.875	21.9
30	90.0	0.875	78.8
25	25.0	0.875	21.9
<b>Max Cap:</b>	<b>30.0</b>	<b>Des Cap:</b>	<b>26.3</b>
30	30.0	0.875	26.3
<b>Max Cap:</b>	<b>0.0</b>	<b>Des Cap:</b>	<b>0.0</b>
25	0.0	0.875	0.0

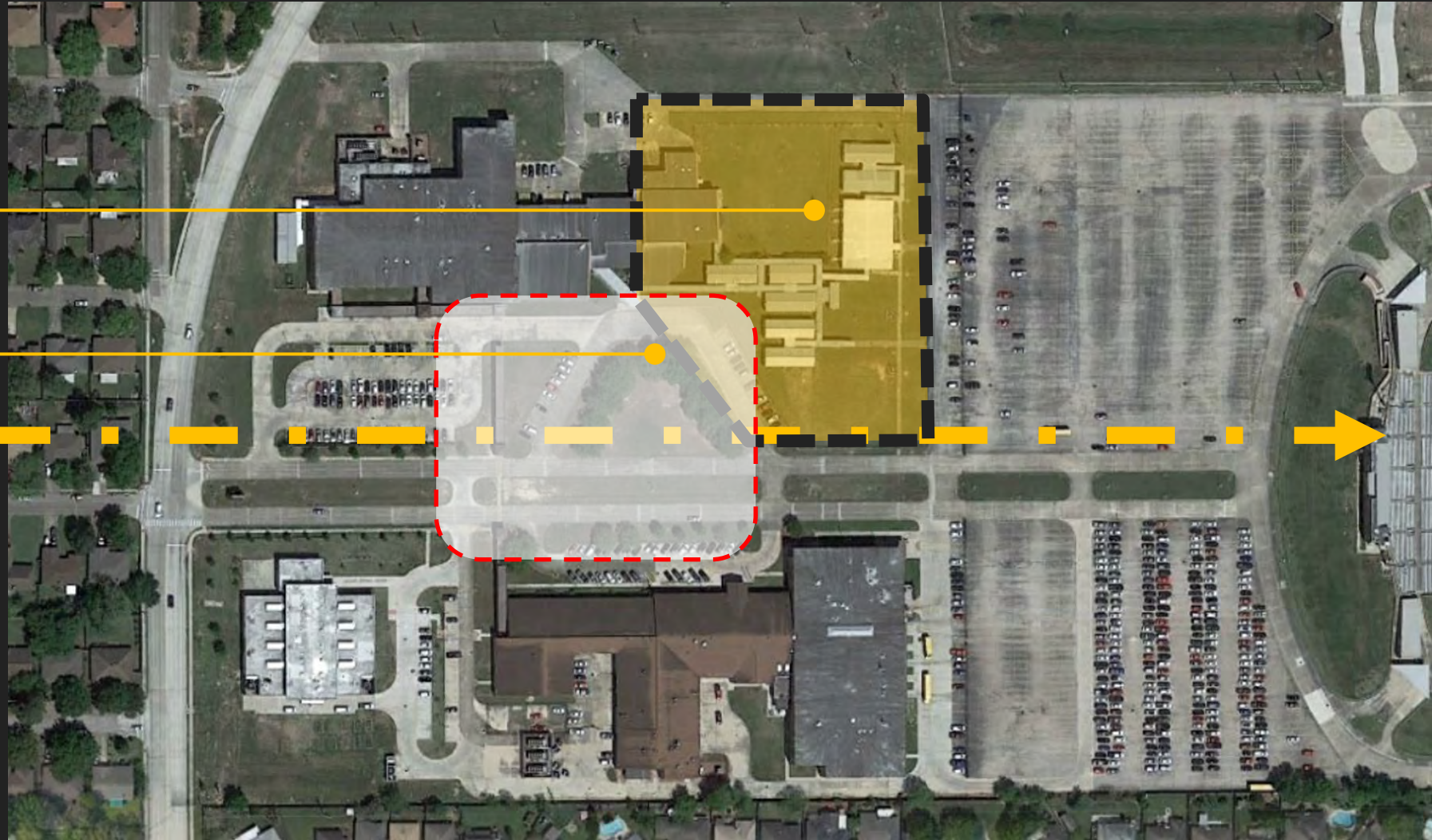
<b>Max Cap:</b>	<b>40.0</b>	<b>Des Cap:</b>	<b>35.0</b>
25	25.0	0.875	21.9
15	15.0	0.875	13.1

Lower Eff = Capacity Calc (.75 Eff - 6/8 periods)

Max Cap: **585.0** Des Cap: **438.8**  
Average (Max, Des Cap): **511.9**



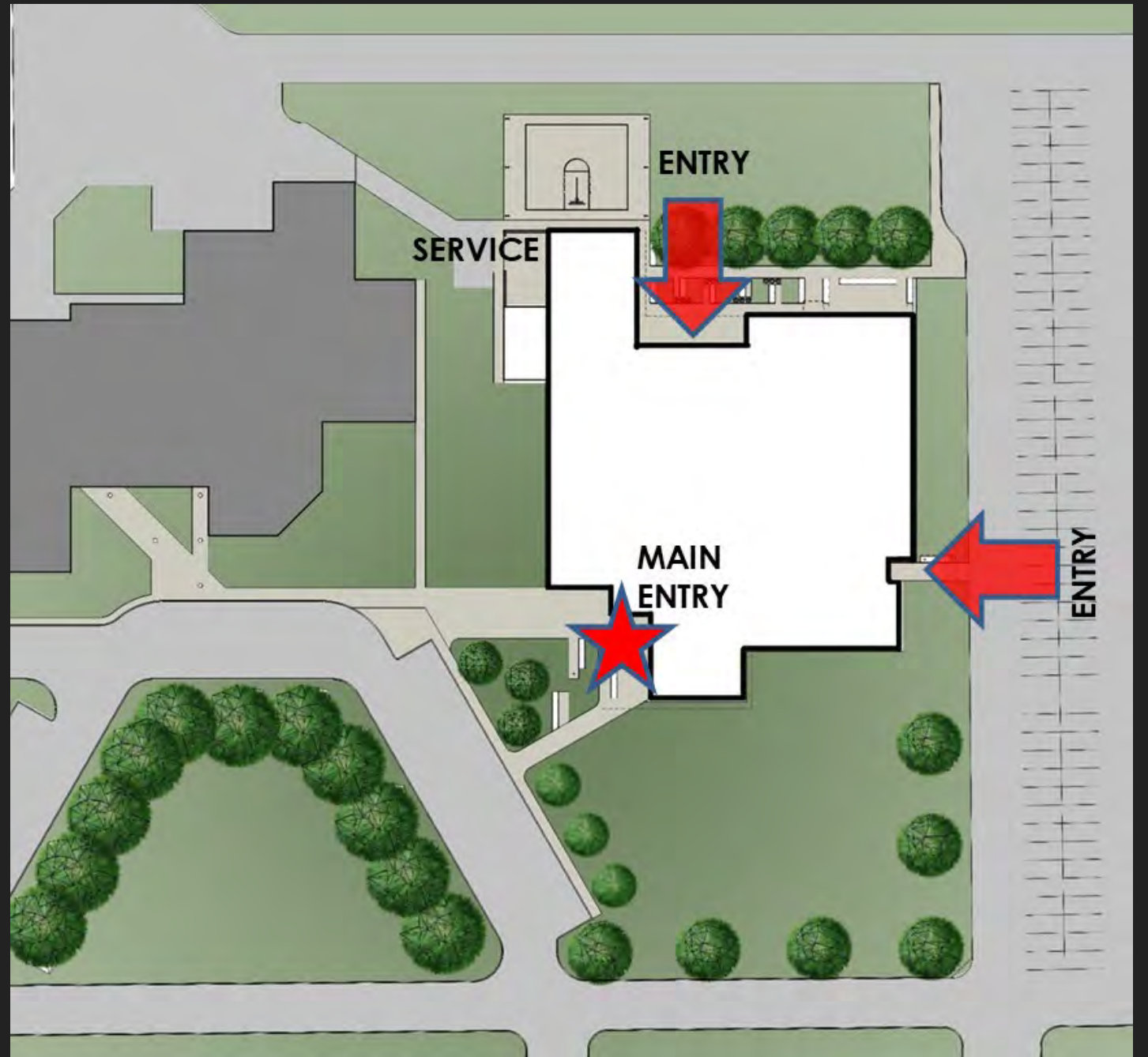
# SITE ANALYSIS



Proposed Location  
NEW RAINES HIGH SCHOOL

Develop around the central  
Courtyard to complete the  
loop

# Floor Plan

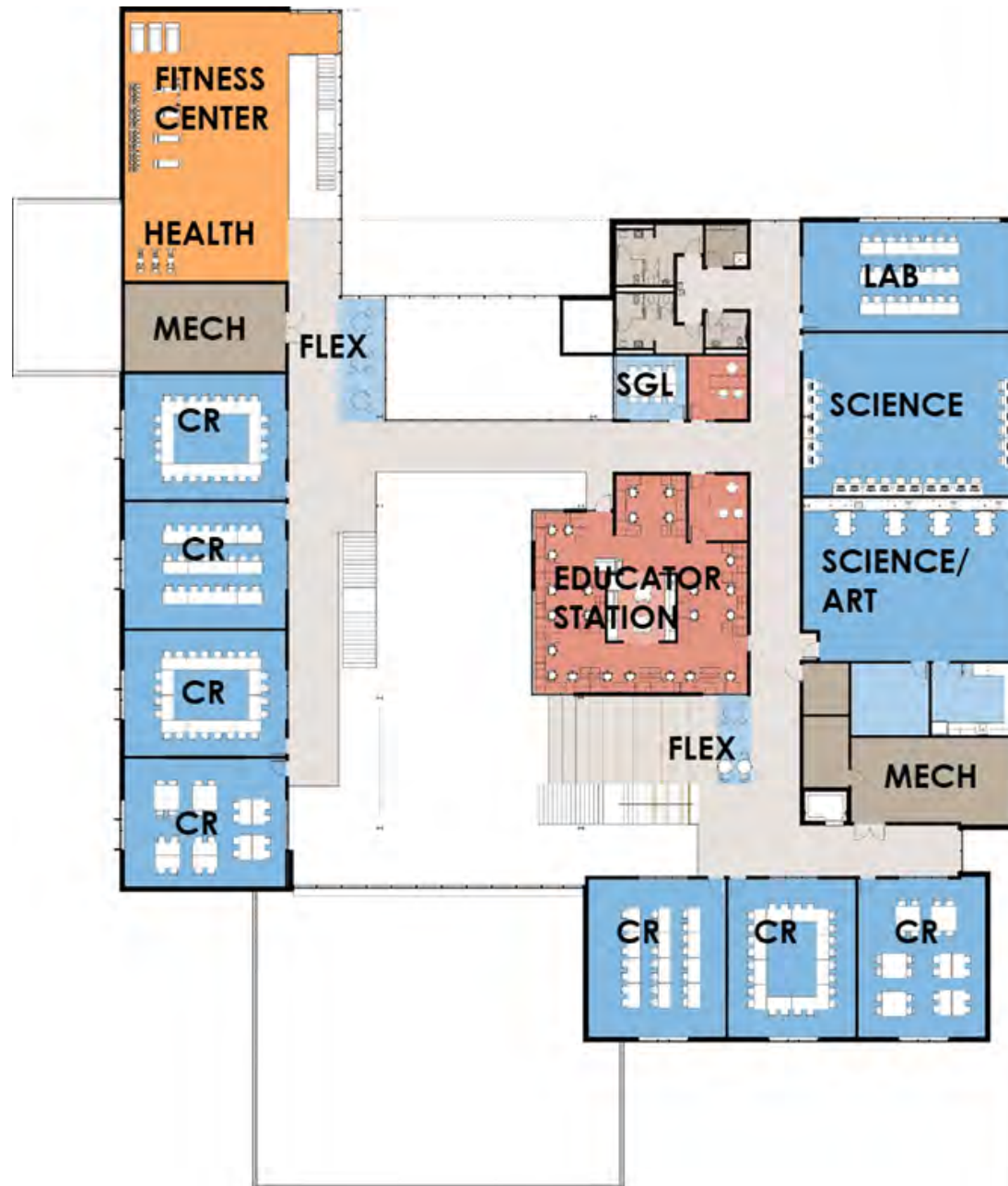


# 1<sup>st</sup> Floor Plan

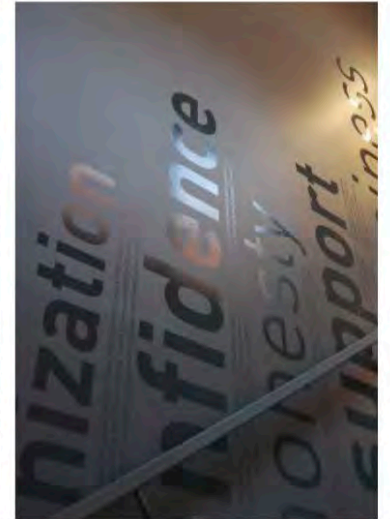
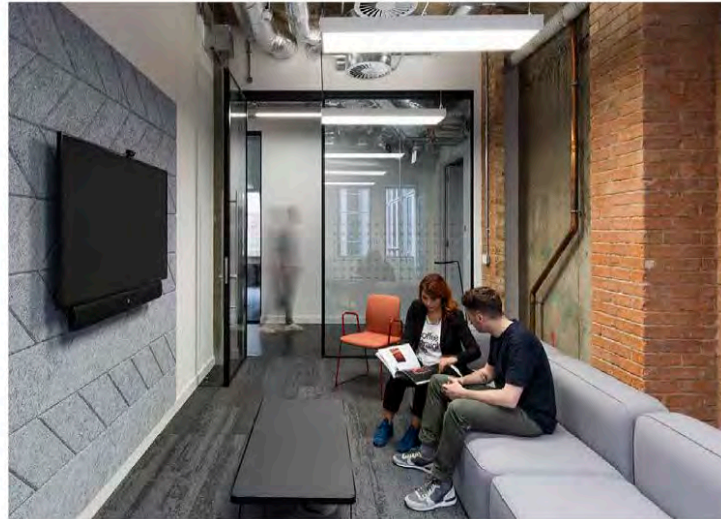
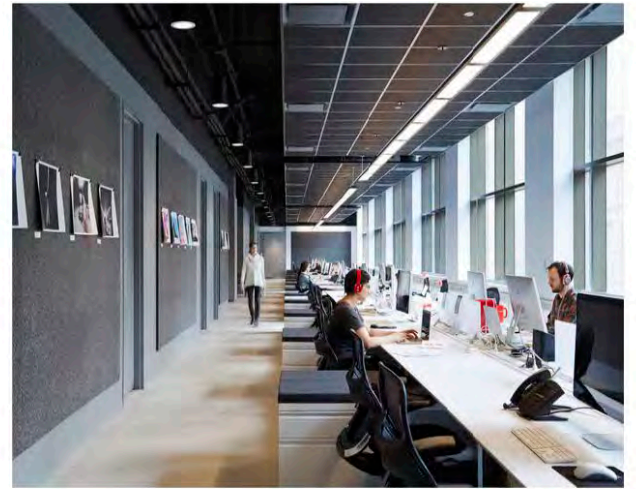
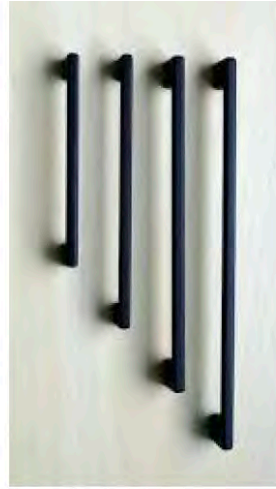


Blue	ACADEMICS
Yellow	MEDIA/COMMONS
Red	ADMINISTRATION
Orange	FITNESS/LOCKERS
Brown	HVAC/STORAGE/RESTROOMS

# 2<sup>nd</sup> Floor Plan



Blue	ACADEMICS
Yellow	MEDIA/COMMONS
Red	ADMINISTRATION
Orange	FITNESS/LOCKERS
Brown	HVAC/STORAGE/RESTROOMS



raw

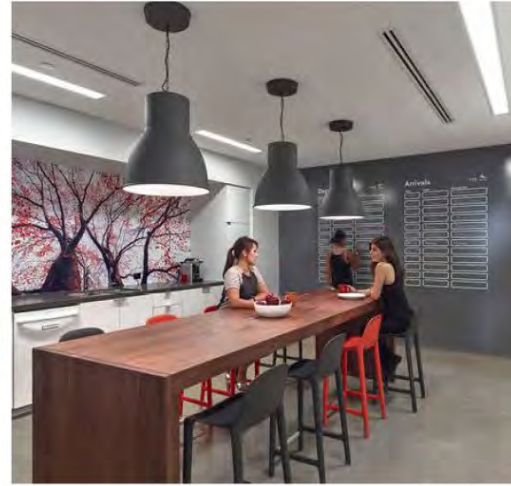
industrial

bold

geometric

un-refined

# TECHNICALLY MODERN



creative

colorful

casual

inspirational

bright

# INVENTIVE AND WHIMSICAL



sophisticated

polished

crisp

organized

warm

# PROFESSIONALLY ELEGANT

- Inspirational
- Flexible and Functional
- Collegiate
- Daylight
- Views
- Warm and comforting



# Learning Environment





INTERIOR & EXTERIOR CONNECTIVITY

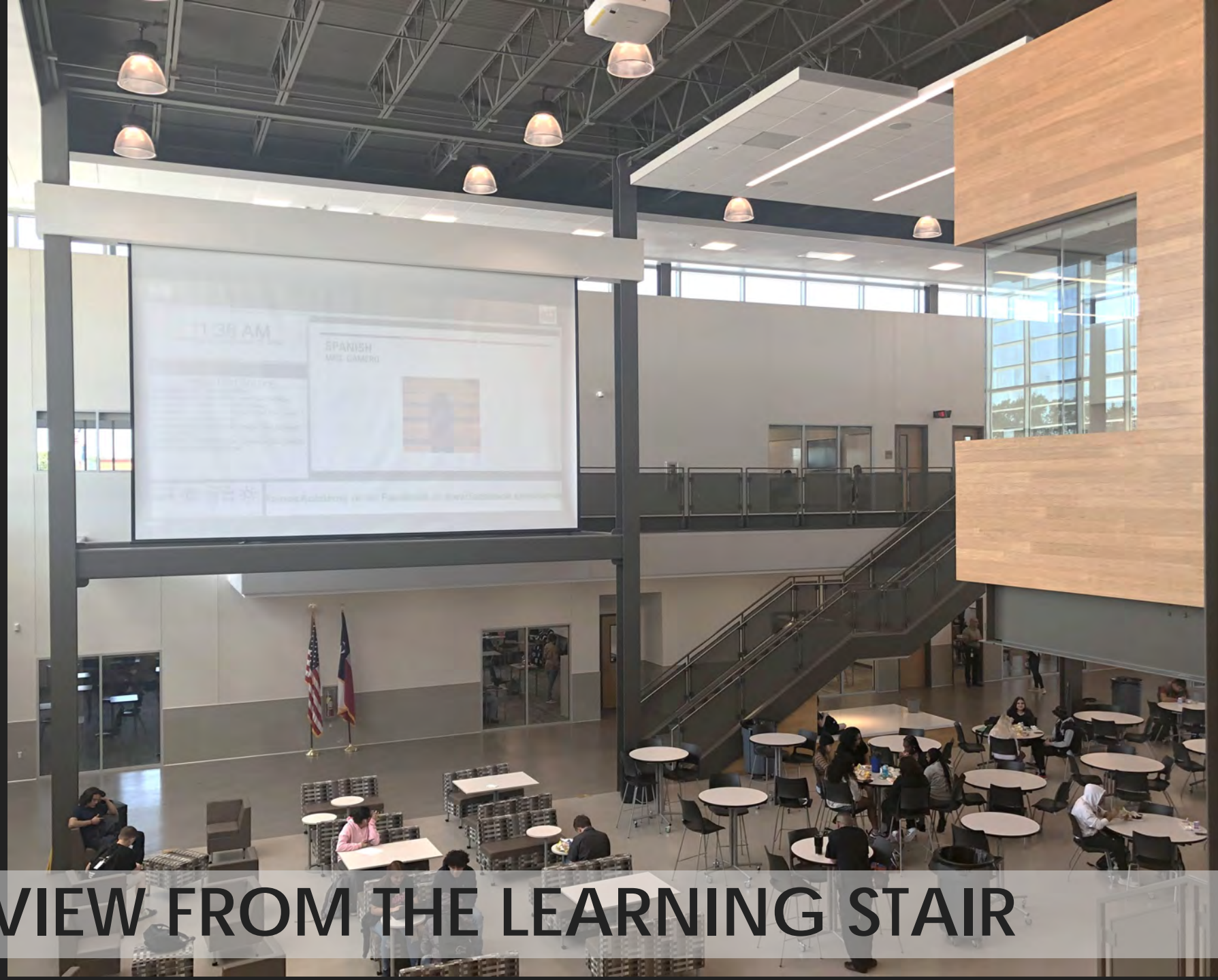


RA

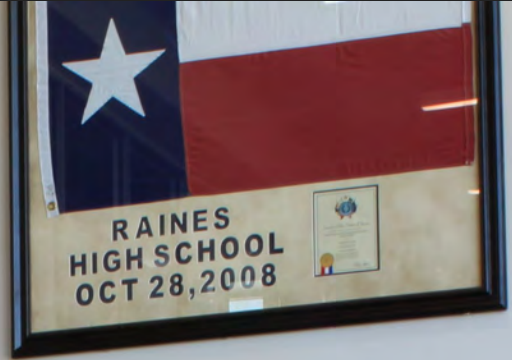
MARTHA RAINES ACADEMY

**CAMPUS COMMONS = HEART**

*"Just like how kitchen is the heart of a house, our commons makes us feel at home"*



**COMMONS VIEW FROM THE LEARNING STAIR**



**MEDIA CENTER OVERLOOKS THE COMMONS**

# CLASSROOM WINDOWS: VISIBILITY & DAYLIGHT



# INTERIOR CONNECTIVITY



# INTERIOR CONNECTIVITY



# EXTERIOR CONNECTIVITY







**EXTERIOR CONNECTIVITY**

# EXTERIOR CONNECTIVITY



# EXTERIOR CONNECTIVITY



# EXTERIOR CONNECTIVITY



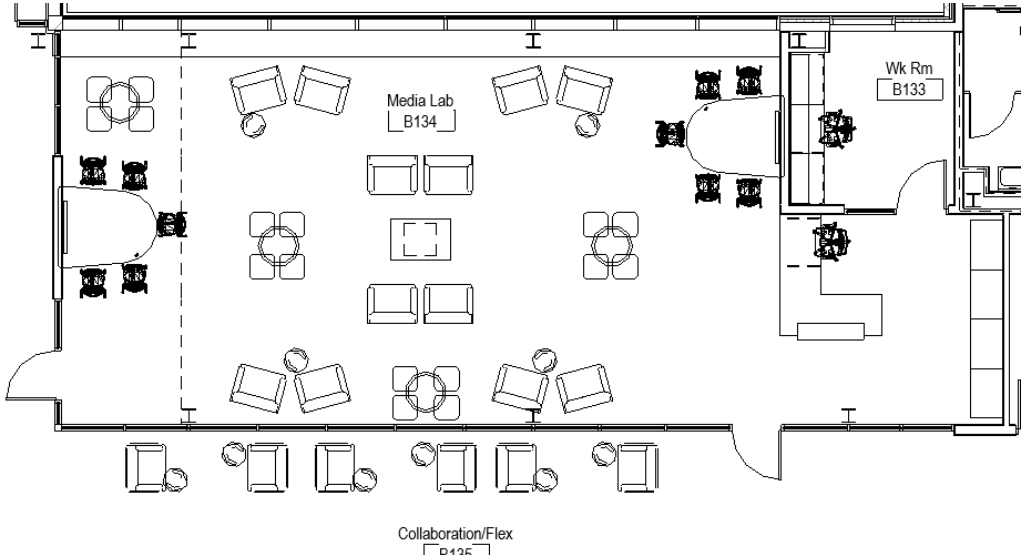
THE RAINES ACADEMY

NEVER GIVE UP  
STAY MOTIVATED  
EXPLORE THE UNKNOWN  
SET GOALS  
BE FEARLESS  
DREAM BIG  
STAY CURIOUS  
EXPLORE  
BE PATIENT  
THINK CREATIVELY  
DISCOVER  
SPEAK THOUGHTFULLY  
BE KIND  
BE THE BEST VERSION OF YOU  
MAKE EACH DAY YOUR MASTERPIECE  
KEEP TRYING  
DISCOVER WHAT DRIVES YOU  
YOU ARE THE FUTURE  
EXPLORE THE POSSIBILITIES  
LEARN CRITICALLY  
CREATIVITY  
COURAGE  
A STRATEGY  
HOW TO WIN  
BELIEVE YOU  
CAN BE FEARLESS  
WORK AS A TEAM  
YOU ARE LIMITLESS



## FURNITURE DESIGN

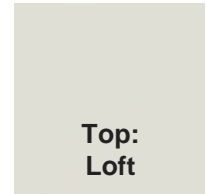
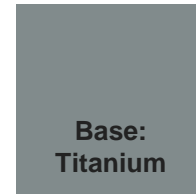
- DESIGN LAYOUTS
- BUDGET ESTIMATES
- INVENTORY
- CONSTRUCTION PHASE REVIEW AND CLOSEOUT



KI Doni Chair on Casters



HON Arrange Table with Disc Base



HON Invitation Lounge Chair  
**DISCONTINUED**



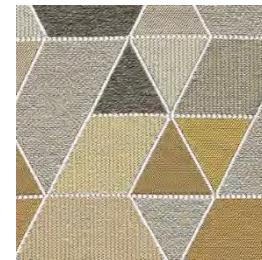
Selected

HON Astir Lounge Chair

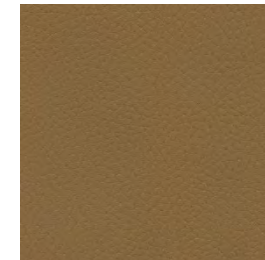


Proposed

National Whimsy  
Square Stool on Casters



Stool: Side



Stool: Seat  
Chair: Side or  
Seat



Chair: Side or  
Seat

Media Lab



THANK YOU



LEARNING FOR ALL!



RAINES ACADEMY  
GROWING TODAY. LEADING TOMORROW.